



Edmonton Alberta

\$809,900

Discover luxury living in this stunning 2-story home in the desirable Meadows of Laurel. With exceptional upgrades, including expansive backsplash, quartz tops, & extended European-style kitchen, this nest is designed for both elegance and functionality. Elegant foyer leads to a grand living rm w/ soaring ceilings, captivating lighting, & an artistic feature wall with a designer fireplace. The spacious modern kitchen & spice kitchen are perfect for gatherings, showcasing stylish 2-tone cabinetry, a massive island, & a cozy nook. A versatile den/bedrm, a full bath, and a generous mudrm w/ ample storage complete this level. Upstairs enjoy 4 spacious bedrms, a bonus rm, 3 full baths, and a well-organized laundry rm. Owner's suite is a luxurious retreat w/ a spa-like ensuite featuring double sinks, a custom tile shower, an exquisite standalone tub & a large walk-in closet. Unfinished basement with a separate entrance awaits your personal touch. Don't miss the opportunity to call this exceptional home yours! (id:6769)

Living room Measurements not available x 5.6 m

Dining room Measurements not available x 3.6 m

Kitchen Measurements not available x 4.2 m

Bedroom 5 3.25 m X 3.6 m

Second Kitchen Measurements not available x 2.7 m

Primary Bedroom Measurements not available x 6.1 m

Bedroom 2 Measurements not available x 3.7 m

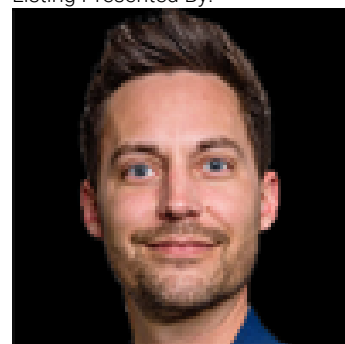
Bedroom 3 Measurements not available x 3.6 m

Bedroom 4 Measurements not available x 3.9 m

Bonus Room Measurements not available x 3.6 m

Laundry room Measurements not available x 1.6 m

Listing Presented By:



Originally Listed by:
MaxWell Polaris

RE/MAX ELITE

RE/MAX Elite Sherwood Park

#116, 150 Chippewa Rd ,
Edmonton, Alberta,

Phone: 780-984-9399

Fax:

steveleddy@hotmail.com

The property information on this website is derived from the Canadian Real Estate Association's Data Distribution Facility (DDF®). DDF® references real estate listings held by various brokerage firms and franchisees. The accuracy of information is not guaranteed and should be independently verified. The trademarks REALTOR®, REALTORS® and the REALTOR® logo are controlled by The Canadian Real Estate Association (CREA) and identify real estate professionals who are members of CREA. The trademarks MLS®, Multiple Listing Service® and the associated logos are owned by CREA and identify the quality of services provided by real estate professionals who are members of CREA.