



Sherwood Park Alberta

\$718,900

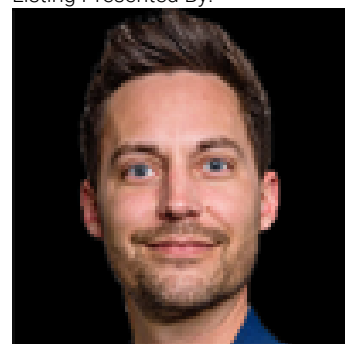
Offering over 2,200 sq ft of beautifully designed living space, this home backs directly onto the Cambrian pond system and green space—providing rare privacy with no direct rear neighbors and walking trails just steps away. Large windows throughout flood the home with natural light, highlighting the high-end finishes including upgraded cabinetry, designer lighting, premium flooring, and elegant tray ceilings throughout. The unique front-facing sunken bonus room creates the perfect space for movie nights, relaxing, or entertaining. Featuring 3 bedrooms, 2.5 bathrooms, and a versatile main floor office that can also function as an additional bedroom, this home is thoughtfully designed for modern living. A perfect blend of style, comfort, and location in one of Sherwood Park's fastest-growing communities. (id:6769)

Primary Bedroom Measurements not available

Bedroom 3 Measurements not available

Bedroom 2 Measurements not available

Listing Presented By:



Originally Listed by:
Royal LePage Arteam Realty



RE/MAX Elite Sherwood Park

#116, 150 Chippewa Rd ,
Edmonton, Alberta,

Phone: 780-984-9399

Fax:

steveleddy@hotmail.com

The property information on this website is derived from the Canadian Real Estate Association's Data Distribution Facility (DDF®). DDF® references real estate listings held by various brokerage firms and franchisees. The accuracy of information is not guaranteed and should be independently verified. The trademarks REALTOR®, REALTORS® and the REALTOR® logo are controlled by The Canadian Real Estate Association (CREA) and identify real estate professionals who are members of CREA. The trademarks MLS®, Multiple Listing Service® and the associated logos are owned by CREA and identify the quality of services provided by real estate professionals who are members of CREA.