



Edmonton Alberta

\$425,000

Welcome to The Mila built by Coventry Homes. A beautifully designed end-unit townhome in the desirable community of Crystallina Nera. Offering true ownership with no condo fees, this home comes fully finished with front and back landscaping and includes a 20' x 22' double detached garage. The bright open-concept main floor features a modern kitchen complete with all kitchen appliances included. Upstairs offers well-proportioned bedrooms, smart storage, and a layout that suits families, professionals, or first-time buyers alike. Set in one of north Edmonton's most sought-after neighbourhoods, Crystallina Nera is known for its scenic walking trails, parks, lakes, and playgrounds, along with excellent access to schools, daycares, shopping, and restaurants. With quick connections to Anthony Henday Drive, commuting throughout the city is effortless. This home delivers modern living, everyday convenience, and long-term value in a thriving community. (id:6769)

Living room 3.8 m X 4 m

Dining room 3.8 m X 3 m

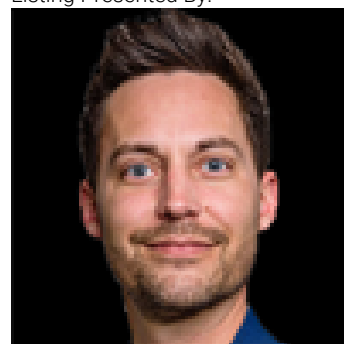
Kitchen 3.8 m X 3.9 m

Primary Bedroom 3.9 m X 3.5 m

Bedroom 2 2.8 m X 3 m

Bedroom 3 2.9 m X 3 m

Listing Presented By:



Originally Listed by:
MaxWell Challenge Realty

<https://www.rivervalleyrealty.ca/>

RE/MAX ELITE

RE/MAX Elite Sherwood Park

#116, 150 Chippewa Rd ,
Edmonton, Alberta,

Phone: 780-984-9399

Fax:

steveleddy@hotmail.com

The property information on this website is derived from the Canadian Real Estate Association's Data Distribution Facility (DDF®). DDF® references real estate listings held by various brokerage firms and franchisees. The accuracy of information is not guaranteed and should be independently verified. The trademarks REALTOR®, REALTORS® and the REALTOR® logo are controlled by The Canadian Real Estate Association (CREA) and identify real estate professionals who are members of CREA. The trademarks MLS®, Multiple Listing Service® and the associated logos are owned by CREA and identify the quality of services provided by real estate professionals who are members of CREA.