

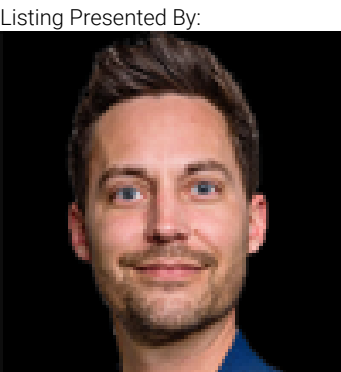


# Edmonton Alberta

\$425,000

Absolutely stunning 3-storey townhome FACING the park & greenspace with sunny SOUTH exposure! Extensively upgraded (\$20K+) and thoughtfully designed for comfort, style & functionality. Fully finished ground-level flex room. Open-concept main floor features a spacious living room with an upgraded electric fireplace/TV wall, large south-facing window, and balcony with park views. Gourmet kitchen boasts 3 quartz countertops, upgraded cabinetry with pot/pan drawers, canopy hood fan & high-end stainless steel appliances. Elegant glass railing leads upstairs to the primary suite with walk-in closet & 3-pc ensuite, plus 2 additional bedrooms, full bath & laundry. Double attached garage. Extras include California knockdown ceilings & CAT6 wiring. Prime location--walk to George P. Nicholson School, ponds, ravine trails; close to YMCA, shopping, restaurants & transit. One of the best units in the complex--You will not be disappointed! (id:6769)

- Den 2.9 m X 2.25 m
- Living room 3.2 m X 3.6 m
- Dining room 2.6 m X 3.6 m
- Kitchen 3.65 m X 3.05 m
- Primary Bedroom 3.63 m X 3.63 m
- Bedroom 2 2.62 m X 3.34 m
- Bedroom 3 2.53 m X 3.35 m



Listing Presented By:

Originally Listed by:  
 Mozaic Realty Group  
<http://www.fanyangteam.com/>



**RE/MAX Elite Sherwood Park**  
 #116, 150 Chippewa Rd ,  
 Edmonton, Alberta,  
 Phone: 780-984-9399  
 Fax:  
 steveleddy@hotmail.com

The property information on this website is derived from the Canadian Real Estate Association's Data Distribution Facility (DDF®). DDF® references real estate listings held by various brokerage firms and franchisees. The accuracy of information is not guaranteed and should be independently verified. The trademarks REALTOR®, REALTORS® and the REALTOR® logo are controlled by The Canadian Real Estate Association (CREA) and identify real estate professionals who are members of CREA. The trademarks MLS®, Multiple Listing Service® and the associated logos are owned by CREA and identify the quality of services provided by real estate professionals who are members of CREA.