



Edmonton Alberta

\$469,000

This beautiful 4 level split sits on a huge corner lot. Approximately 1,224 square feet above grade with two full bathrooms and one half bathroom in master bedroom. Below grade includes another living room, flex room, 4 piece bathroom, mechanical/laundry, recreation/games room and another bedroom encompassing roughly another +/-1,072 square feet for total livable area of +/- 2.296 square feet Large double detached garage with breezeway to house. Close to schools, shopping centre, Grey Nuns Hospital, Millwoods Metro Line LRT station, and easy access to Anthony Henday ring road, . Roof replaced in 2020. Call Dan at 780-975-7317 to schedule a viewing. (id:6769)

Bedroom 4 4.09 m X 3.89 m

Laundry room 4.08 m X 2.24 m

Recreation room 3.7 m X 5.23 m

Other 9.3 m X 1.66 m

Living room 3.96 m X 4.76 m

Dining room 4.4 m X 2.42 m

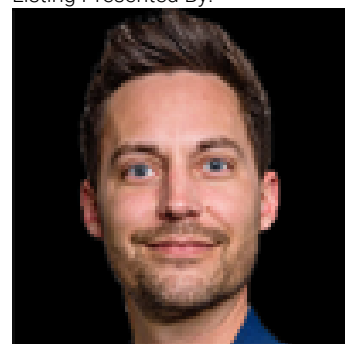
Kitchen 4.25 m X 4 m

Primary Bedroom 4.17 m X 2.65 m

Bedroom 2 3.03 m X 3.64 m

Bedroom 3 3.6 m X 3.48 m

Listing Presented By:



Originally Listed by:
Lux Real Estate Inc

RE/MAX ELITE

RE/MAX Elite Sherwood Park

#116, 150 Chippewa Rd ,
Edmonton, Alberta,

Phone: 780-984-9399

Fax:

steveleddy@hotmail.com

The property information on this website is derived from the Canadian Real Estate Association's Data Distribution Facility (DDF®). DDF® references real estate listings held by various brokerage firms and franchisees. The accuracy of information is not guaranteed and should be independently verified. The trademarks REALTOR®, REALTORS® and the REALTOR® logo are controlled by The Canadian Real Estate Association (CREA) and identify real estate professionals who are members of CREA. The trademarks MLS®, Multiple Listing Service® and the associated logos are owned by CREA and identify the quality of services provided by real estate professionals who are members of CREA.