



Edmonton Alberta

\$699,900

Welcome to this STUNNING WALKOUT HOME in the highly sought-after community of Klarvatten! Offering over 2400 SQFT of well-designed living space, this home is loaded with PREMIUM UPGRADES and backs onto BEAUTIFUL GREEN SPACE. Featuring 4 BEDROOMS, 3 FULL BATHROOMS, a SPACIOUS BONUS ROOM, plus a MAIN FLOOR BEDROOM AND FULL BATH—perfect for guests or multi-generational living. The main floor showcases 9FT CEILINGS and elegant 8FT DOORS, creating a bright and open atmosphere. Upgrades include PREFINISHED DOORS, MAGNETIC DOOR STOPPERS, and SOFT-CLOSE SHOWER DOORS. The PRIMARY BEDROOM boasts a PRIVATE BALCONY and a luxurious JACUZZI for ultimate relaxation. Enjoy the DECK overlooking the WALKOUT BASEMENT, ideal for future development. OVERSIZED GARAGE with 18FT DOOR. Conveniently located near major highways, schools, parks, and shopping. (id:6769)

Living room 4.76m x 4.60m

Dining room 3.67m x 2.98m

Kitchen 3.45m x 3.73m

Bedroom 2 3.04m x 3.04m

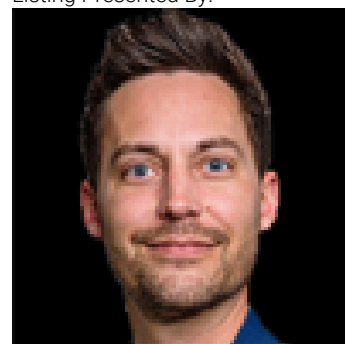
Primary Bedroom 4.33m x 4.24m

Bedroom 3 3.11m x 4.05m

Bedroom 4 4.57m x 4.36m

Bonus Room 4.46m x 6.30m

Listing Presented By:



Originally Listed by:
MaxWell Polaris

<https://amitpatelhomes.ca/>

RE/MAX ELITE

RE/MAX Elite Sherwood Park

#116, 150 Chippewa Rd,
Edmonton, Alberta,

Phone: 780-984-9399

Fax:

steveleddy@hotmail.com

The property information on this website is derived from the Canadian Real Estate Association's Data Distribution Facility (DDF®). DDF® references real estate listings held by various brokerage firms and franchisees. The accuracy of information is not guaranteed and should be independently verified. The trademarks REALTOR®, REALTORS® and the REALTOR® logo are controlled by The Canadian Real Estate Association (CREA) and identify real estate professionals who are members of CREA. The trademarks MLS®, Multiple Listing Service® and the associated logos are owned by CREA and identify the quality of services provided by real estate professionals who are members of CREA.