

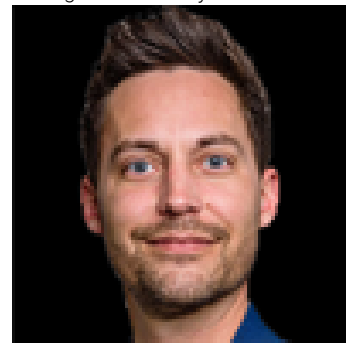


Edmonton Alberta

\$37

Welcome to Gorman Landing, POSSESSION Q1/2025. FINAL UNITS REMAINING. Nestled at the intersection of Gorman Street and 18th Street. Multiple bay sizes. Come join our daycare, gas station, liquor store, Cannabis,Vape and dentist. (id:6769)

Listing Presented By:



Originally Listed by:
MaxWell Polaris

<http://www.romisarna.ca/>

RE/MAX ELITE

RE/MAX Elite Sherwood Park

#116, 150 Chippewa Rd ,
Edmonton, Alberta,

Phone: 780-984-9399

Fax:

steveleddy@hotmail.com

The property information on this website is derived from the Canadian Real Estate Association's Data Distribution Facility (DDF®). DDF® references real estate listings held by various brokerage firms and franchisees. The accuracy of information is not guaranteed and should be independently verified. The trademarks REALTOR®, REALTORS® and the REALTOR® logo are controlled by The Canadian Real Estate Association (CREA) and identify real estate professionals who are members of CREA. The trademarks MLS®, Multiple Listing Service® and the associated logos are owned by CREA and identify the quality of services provided by real estate professionals who are members of CREA.