



Edmonton Alberta

\$648,800

Step into modern elegance in this nearly 2,000 sq. ft. two-story gem with double attached garage, where every detail has been curated for comfort and style. This well-maintained residence boasts gleaming hardwood across all levels, sleek tile in the bathrooms, and newer lighting throughout for a contemporary feel. The main floor is an entertainer's dream, featuring a sun-drenched living room anchored by a cozy gas fireplace. Chef inspired kitchen, complete with soft-close cabinetry and stainless steel appliances, flows seamlessly into the dining area and a dedicated den, perfect for a home office. Upstairs, find your sanctuary in the sprawling primary suite, featuring a private ensuite and a spacious walk-in closet. The fully finished basement is the ultimate retreat, offering a massive cinema-style family room and a sleek wet bar. Outside, enjoy summer BBQs on the large back patio, all while resting easy under a newer roof. Located steps from parks, schools, and recreation centers. Plus RV parking. (id:6769)

Family room 5.28 m X 8.17 m

Bedroom 4 3.14 m X 4.24 m

Living room 4.89 m X 5.35 m

Dining room 4.41 m X 3.32 m

Kitchen 5.65 m X 3.94 m

Den Measurements not available

Office 3.51 m X 3.32 m

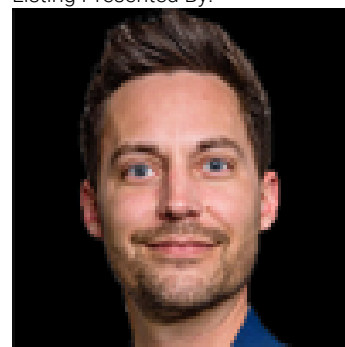
Laundry room 4.45 m X 2.45 m

Primary Bedroom 3.32 m X 6.7 m

Bedroom 2 3.33 m X 4.06 m

Bedroom 3 3.32 m X 3.37 m

Listing Presented By:



Originally Listed by:
Real Broker

<http://www.edmontonhome.com/>

RE/MAX ELITE

RE/MAX Elite Sherwood Park

#116, 150 Chippewa Rd ,
Edmonton, Alberta,

Phone: 780-984-9399

Fax:

steveleddy@hotmail.com

The property information on this website is derived from the Canadian Real Estate Association's Data Distribution Facility (DDF®). DDF® references real estate listings held by various brokerage firms and franchisees. The accuracy of information is not guaranteed and should be independently verified. The trademarks REALTOR®, REALTORS® and the REALTOR® logo are controlled by The Canadian Real Estate Association (CREA) and identify real estate professionals who are members of CREA. The trademarks MLS®, Multiple Listing Service® and the associated logos are owned by CREA and identify the quality of services provided by real estate professionals who are members of CREA.