



St. Albert Alberta

\$550,000

Absolutely beautiful and extremely well-cared-for 1,405 sq ft 4-bedroom bungalow featuring a spacious white kitchen with island, corner pantry, abundant cabinetry, and quartz countertops. The open living room offers vaulted ceilings and a cozy gas fireplace. Main floor highlights include laundry, a second bedroom/office, and an extra-large primary suite with vaulted ceilings, a 3-piece ensuite and walk-in closet. The fully finished basement boasts a large family room with a second gas fireplace, 2 oversized bedrooms, a 4-piece bath, and generous storage. Recent upgrades include a newer furnace(2020), hot water tank(2021), and roof (2015). The private backyard is beautifully landscaped with mature trees, perennials, a gazebo, and a shed. Enjoy morning coffee on the charming front veranda. Double attached garage completes this move-in-ready gem. (id:6769)

Bedroom 3 4.04 m X 3.61 m

Bedroom 4 3.59 m X 3.06 m

Recreation room 8.49 m X 5.68 m

Storage 5.63 m X 2.99 m

Living room 5 m X 4.62 m

Dining room 5.08 m X 2.12 m

Kitchen 4.74 m X 4.2 m

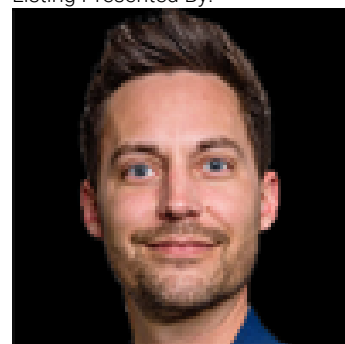
Primary Bedroom 5.09 m X 4.29 m

Bedroom 2 3.61 m X 3.54 m

Laundry room Measurements not available

Breakfast 3.98 m X 3.2 m

Listing Presented By:



Originally Listed by:
RE/MAX Elite

<http://www.carriebanhamposty.com/>

RE/MAX ELITE

RE/MAX Elite Sherwood Park

#116, 150 Chippewa Rd ,
Edmonton, Alberta,

Phone: 780-984-9399

Fax:

steveleddy@hotmail.com

The property information on this website is derived from the Canadian Real Estate Association's Data Distribution Facility (DDF®). DDF® references real estate listings held by various brokerage firms and franchisees. The accuracy of information is not guaranteed and should be independently verified. The trademarks REALTOR®, REALTORS® and the REALTOR® logo are controlled by The Canadian Real Estate Association (CREA) and identify real estate professionals who are members of CREA. The trademarks MLS®, Multiple Listing Service® and the associated logos are owned by CREA and identify the quality of services provided by real estate professionals who are members of CREA.