



## Sherwood Park Alberta

\$419,900

A character filled mid-century modern style home on just over a 1/4 acre corner lot in Sherwood Heights! 3 level split, 1252 sqft + developed 3rd level and crawl space storage area. Many classic features including timeless, original hardwood floors, open beam vaulted ceilings, and transom window. Top floor; 2 bedrooms & main bathroom. Main floor; renovated kitchen, dining room, living room, wood burning fireplace, and family room. Basement; bedroom #3, 3 piece bathroom with shower, laundry room and crawl space access. Attached sun room leads to the treed & private fenced yard with patio & perennial flower beds. Huge front paved driveway plus a large 6 car side driveway & double detached garage (23'8 x 22'). Ideal central Sherwood Park location; walking distance to all levels of schools, shopping plazas and restaurants, Broadmoor Lake Park, Kinsmen Leisure Centre, SP Arena, Broadmoor Golf Course, Pickle Ball Courts, Tennis Courts, scenic nature trails, and more! (id:6769)

Bedroom 3 3.03 m X 3.17 m

Laundry room 2.27 m X 3.78 m

Living room 3.48 m X 5.09 m

Dining room 3.58 m X 3.11 m

Kitchen 3.23 m X 3.66 m

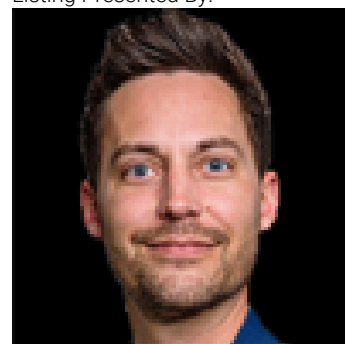
Family room 6.79 m X 3.54 m

Sunroom 2.95 m X 7.58 m

Primary Bedroom 3.27 m X 3.44 m

Bedroom 2 2.59 m X 3.42 m

Listing Presented By:



Originally Listed by:  
Royal LePage Prestige Realty

<http://www.jodieallen.com/>

**RE/MAX ELITE**

**RE/MAX Elite Sherwood Park**

#116, 150 Chippewa Rd ,  
Edmonton, Alberta,

Phone: 780-984-9399

Fax:

steveleddy@hotmail.com

The property information on this website is derived from the Canadian Real Estate Association's Data Distribution Facility (DDF®). DDF® references real estate listings held by various brokerage firms and franchisees. The accuracy of information is not guaranteed and should be independently verified. The trademarks REALTOR®, REALTORS® and the REALTOR® logo are controlled by The Canadian Real Estate Association (CREA) and identify real estate professionals who are members of CREA. The trademarks MLS®, Multiple Listing Service® and the associated logos are owned by CREA and identify the quality of services provided by real estate professionals who are members of CREA.