



Edmonton Alberta

\$600,250

Designed for elevated family living, The Apex offers style, space, and smart functionality. This four-bedroom home features a double attached garage with floor drain, 9' main-floor ceilings, luxury vinyl plank flooring, and a separate side entrance. The main level includes a full 3-piece bath and bedroom—perfect for guests or multi-generational living plus a mudroom with garage access. The open-concept kitchen, nook, and great room are ideal for entertaining, showcasing quartz countertops, a large island with eating ledge, upgraded soft-close cabinetry, built-in microwave, Silgranit sink, chimney-style hood fan, full-height backsplash, and pantry. Large windows and an electric fireplace brighten the space. Upstairs features a primary retreat with 5-piece ensuite and walk-in closet, bonus room, two additional bedrooms, full bath, and laundry. Includes brushed nickel fixtures, upgraded railings, basement rough-ins, and Sterling Signature Specifications. (id:6769)

Kitchen 10.6 m X 17 m

Bedroom 4 9 m X 9.1 m

Great room 12.6 m X 14.5 m

Breakfast 12.6 m X 9.1 m

Mud room Measurements not available

Primary Bedroom 12.2 m X 15.1 m

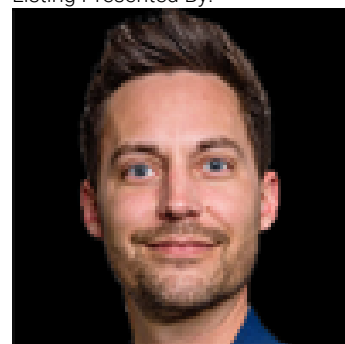
Bedroom 2 11.8 m X 9.7 m

Bedroom 3 11 m X 10.2 m

Bonus Room 13.8 m X 13.1 m

Laundry room Measurements not available

Listing Presented By:



Originally Listed by:
Exp Realty

<http://www.davidlam.exp Realty.com/>

RE/MAX ELITE

RE/MAX Elite Sherwood Park

#116, 150 Chippewa Rd ,
Edmonton, Alberta,

Phone: 780-984-9399

Fax:

steveleddy@hotmail.com

The property information on this website is derived from the Canadian Real Estate Association's Data Distribution Facility (DDF®). DDF® references real estate listings held by various brokerage firms and franchisees. The accuracy of information is not guaranteed and should be independently verified. The trademarks REALTOR®, REALTORS® and the REALTOR® logo are controlled by The Canadian Real Estate Association (CREA) and identify real estate professionals who are members of CREA. The trademarks MLS®, Multiple Listing Service® and the associated logos are owned by CREA and identify the quality of services provided by real estate professionals who are members of CREA.