



## Edmonton Alberta

\$579,999

Discover your dream home in the prestigious SUMMERSIDE! This former luxurious SHOW HOME carries pride of ownership throughout. Step inside to a grand foyer & MAPLE STAIRCASE that sets the elegance tone within. The main floor offers inviting open-concept layout featuring rich espresso HARDWOOD floor, COFFERED ceiling & sun-soaked living area w/cozy gas fireplace. The gourmet kitchen is perfect for entertaining, highlighted by a large island w/raised eating bar, corner pantry, GRANITE countertops, SS appliances & ample cabinetry. A convenient half bath & laundry complete this level. Upstairs, unwind in the bright BONUS ROOM or retreat to one of two KING SIZE bedrooms w/full bath in between. The spacious primary suite offers natural daylight through GIANT WINDOWS, walk-in closet & spa-like 5-piece ensuite w/jetted tub & stand-up shower. The unfinished basement awaits your personal design. Outside, enjoy summer evenings on back deck w/NO NEIGHBOURS at the back. A truly immaculate home that captures HEARTS! (id:6769)

Living room 4.68 m X 5.14 m

Dining room 3.16 m X 3.64 m

Kitchen 3.5 m X 4.22 m

Primary Bedroom 4.78 m X 4.36 m

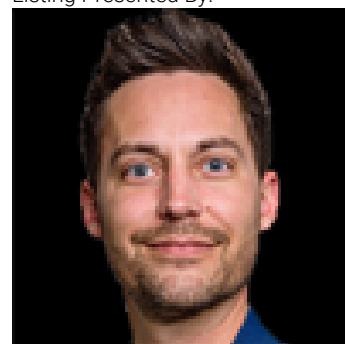
Bedroom 2 3.76 m X 3.64 m

Bedroom 3 3.05 m X 3.88 m

Bonus Room 4.74 m X 4.45 m

Laundry room 2.64 m X 2.45 m

Listing Presented By:



Originally Listed by:  
Royal LePage Noralta Real Estate

**RE/MAX ELITE**

**RE/MAX Elite Sherwood Park**

#116, 150 Chippewa Rd ,  
Edmonton, Alberta,

Phone: 780-984-9399

Fax:

steveleddy@hotmail.com

The property information on this website is derived from the Canadian Real Estate Association's Data Distribution Facility (DDF®). DDF® references real estate listings held by various brokerage firms and franchisees. The accuracy of information is not guaranteed and should be independently verified. The trademarks REALTOR®, REALTORS® and the REALTOR® logo are controlled by The Canadian Real Estate Association (CREA) and identify real estate professionals who are members of CREA. The trademarks MLS®, Multiple Listing Service® and the associated logos are owned by CREA and identify the quality of services provided by real estate professionals who are members of CREA.