



Rural Sturgeon County Alberta

\$649,000

Visit the Listing Brokerage (and/or listing REALTOR(R)) website to obtain additional information. Escape to the tranquility of country living with this spacious 1,570 sq. ft. bungalow in Sturgeon County. Offering 2 bedrooms, 2.5 bathrooms, and a functional layout, this home is full of potential. The bright living room features a classic brick fireplace, while the kitchen, dining area, den, and generous primary suite with walk-in closet and ensuite provide comfortable everyday living. The partially finished basement adds a large family room, 3-piece bath, and plenty of space for future development. An attached shop offers excellent flexibility for hobbies, storage, or a workspace. Situated on a peaceful rural property with open green space and endless possibilities, this is a fantastic opportunity to enjoy the privacy and lifestyle that acreage living has to offer. (id:6769)

Family room 8.32 m X 4.3 m

Living room 6.37 m X 3.57 m

Dining room 2.57 m X 3.54 m

Kitchen 3.23 m X 3.52 m

Den 3.38 m X 2.92 m

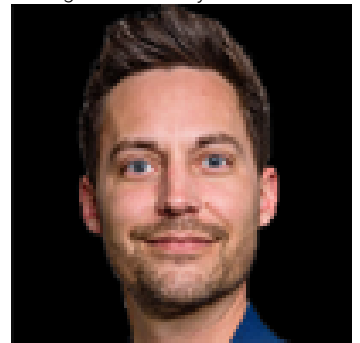
Primary Bedroom 3.4 m X 4.11 m

Bedroom 2 4.11 m X 3.79 m

Workshop 12.56 m X 7.75 m

Laundry room 5.29 m X 2.9 m

Listing Presented By:



Originally Listed by:
HonestDoor Inc

<https://www.honestdoor.com/>



RE/MAX Elite Sherwood Park

#116, 150 Chippewa Rd ,
Edmonton, Alberta,

Phone: 780-984-9399

Fax:

steveleddy@hotmail.com

The property information on this website is derived from the Canadian Real Estate Association's Data Distribution Facility (DDF®). DDF® references real estate listings held by various brokerage firms and franchisees. The accuracy of information is not guaranteed and should be independently verified. The trademarks REALTOR®, REALTORS® and the REALTOR® logo are controlled by The Canadian Real Estate Association (CREA) and identify real estate professionals who are members of CREA. The trademarks MLS®, Multiple Listing Service® and the associated logos are owned by CREA and identify the quality of services provided by real estate professionals who are members of CREA.