

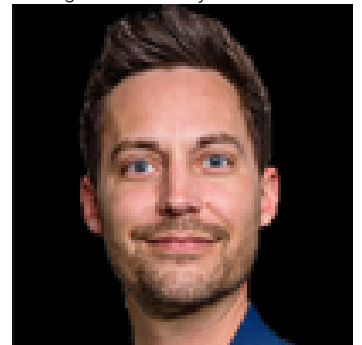


61218 RR 464 #2 Rural Bonnyville M.D. AB

\$479,900

Amazing property, very private 10+ acres with an incredible 403 metres or 1322 feet of lakefront! Oh the possibilities! The perfect place to live, a huge family or group get away, your own amazing year round oasis, or to possibly subdivide, this is a very rare opportunity! Less than 10 minutes from Bonnyville, a little over two hours from Edmonton. Cabin with concrete basement is set up for almost off the grid living, solar powered, wood stove and propane for cooking and hot water tank, cistern, septic tank and field for sinks and shower, plus outhouses. 25 x 30 garage/shop and 25 x 30 barn/shop with mezzanine, both on concrete pads. Many fabulous views. A must see!

Listing Presented By:



Originally Listed by:
Royal LePage Arteam Realty

stevebalay@shaw.ca
<http://stevebalay.com>

RE/MAX ELITE

RE/MAX Elite Sherwood Park

#116, 150 Chippewa Rd ,
Edmonton, Alberta,

Phone: 780-984-9399

Fax:

steveleddy@hotmail.com