



Sherwood Park Alberta

\$529,900

BACKS ONTO WALKING PATH! CLOSE TO RECREATION COMPLEX! Charming bungalow ideally located on a quiet street in the heart of Glen Allan. Offering open concept layout & exceptional access to parks & amenities. Contemporary kitchen has ceiling height cabinetry, quartz counters, stainless appliances, large peninsula, breakfast bar & pantry plus adjacent eating area. Inviting living room is centered around traditional wood burning fireplace, flanked by west windows that fill the space w/natural light. Main floor offers 3 generous size bedrooms including primary w/built-in cabinetry & 3pce ensuite. Stylishly renovated 4pce main bath completes this level. Patio doors lead to massive sunroom overlooking the private backyard w/firepit, storage shed, oversized single garage & direct access to the walking path through the rear gate. Finished basement has 4th bedroom, 3pce bath, rec room, wetbar & laundry/storage. A/C, new furnace '24, shingles & dishwasher'26. Comfortable family living in a sought after neighbourhood! (id:6769)

Bedroom 4 Measurements not available

Laundry room Measurements not available

Storage Measurements not available

Living room Measurements not available

Dining room Measurements not available

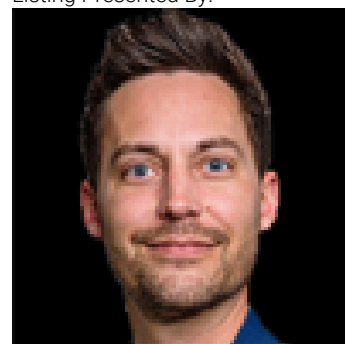
Kitchen Measurements not available

Primary Bedroom Measurements not available

Bedroom 2 Measurements not available

Bedroom 3 Measurements not available

Listing Presented By:



Originally Listed by:
RE/MAX Excellence

<http://deanandosmond.com/>

RE/MAX ELITE

RE/MAX Elite Sherwood Park

#116, 150 Chippewa Rd ,
Edmonton, Alberta,

Phone: 780-984-9399

Fax:

steveleddy@hotmail.com

The property information on this website is derived from the Canadian Real Estate Association's Data Distribution Facility (DDF®). DDF® references real estate listings held by various brokerage firms and franchisees. The accuracy of information is not guaranteed and should be independently verified. The trademarks REALTOR®, REALTORS® and the REALTOR® logo are controlled by The Canadian Real Estate Association (CREA) and identify real estate professionals who are members of CREA. The trademarks MLS®, Multiple Listing Service® and the associated logos are owned by CREA and identify the quality of services provided by real estate professionals who are members of CREA.