



Edmonton Alberta

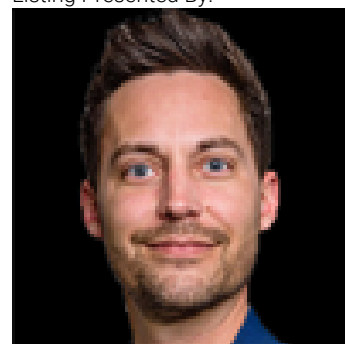
\$150,000

Stylish 2 Bed, 2 Bath Condo with A/C, In-Suite Laundry & Covered Parking! Welcome to Brandon Court--an intimate, well-kept building nestled in the heart of downtown Edmonton's hustle and bustle, yet quietly tucked along a private, tree-lined street. Located in the vibrant Wihkwentowin community, you're walking distance from the scenic River Valley, Grant MacEwan, the new LRT line, and all major amenities. Inside, this professionally cleaned and well-maintained home boasts a unique open-concept kitchen and living room layout, perfect for gathering, while the bedrooms are thoughtfully separated for maximum privacy. The space is finished in neutral tones, ready to match any style. Enjoy the comfort of central A/C, in-suite laundry, and a large, covered balcony that looks out onto a peaceful green view. Plus, a secure, assigned covered parking stall is included for your convenience. Some photos are virtually staged. (id:6769)

Primary Bedroom Measurements not available

Bedroom 2 Measurements not available

Listing Presented By:



Originally Listed by:
Real Broker

<https://briannawagner.edmontonrealestatepro.ca/>

RE/MAX ELITE

RE/MAX Elite Sherwood Park

#116, 150 Chippewa Rd ,
Edmonton, Alberta,

Phone: 780-984-9399

Fax:

steveleddy@hotmail.com

The property information on this website is derived from the Canadian Real Estate Association's Data Distribution Facility (DDF®). DDF® references real estate listings held by various brokerage firms and franchisees. The accuracy of information is not guaranteed and should be independently verified. The trademarks REALTOR®, REALTORS® and the REALTOR® logo are controlled by The Canadian Real Estate Association (CREA) and identify real estate professionals who are members of CREA. The trademarks MLS®, Multiple Listing Service® and the associated logos are owned by CREA and identify the quality of services provided by real estate professionals who are members of CREA.