

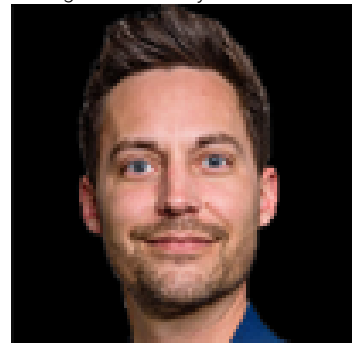


Edmonton Alberta

\$15

Situated steps from MacEwan University in the Central McDougall neighbourhood, 10539 - 108 Street NW offers flexible, demisable space within an established urb...Situating steps from MacEwan University in the Central McDougall neighbourhood, 10539 - 108 Street NW offers flexible, demisable space within an established urban complex. Previously home to uses ranging from professional offices to a dance studio, the building readily accommodates office, studio, personal-service, and commercial-school concepts. The property benefits from strong accessibility, on-site surface parking, and walking distance to the Metro LRT, making it easily reachable for both staff and clients. Positioned within a vibrant inner-city corridor surrounded by numerous restaurants, cafes, and amenities, the building enjoys consistent daytime traffic and a strong neighbourhood draw. With both developed and base building condition options available, and flexible demising starting from 916 SF, this property presents an excellent opportunity for a wide range of businesses seeking a well-located presence in a dynamic Edmonton corridor. (id:6769)

Listing Presented By:



Originally Listed by:
Sable Realty



RE/MAX Elite Sherwood Park

#116, 150 Chippewa Rd ,
Edmonton, Alberta,

Phone: 780-984-9399

Fax:

steveleddy@hotmail.com

The property information on this website is derived from the Canadian Real Estate Association's Data Distribution Facility (DDF®). DDF® references real estate listings held by various brokerage firms and franchisees. The accuracy of information is not guaranteed and should be independently verified. The trademarks REALTOR®, REALTORS® and the REALTOR® logo are controlled by The Canadian Real Estate Association (CREA) and identify real estate professionals who are members of CREA. The trademarks MLS®, Multiple Listing Service® and the associated logos are owned by CREA and identify the quality of services provided by real estate professionals who are members of CREA.