

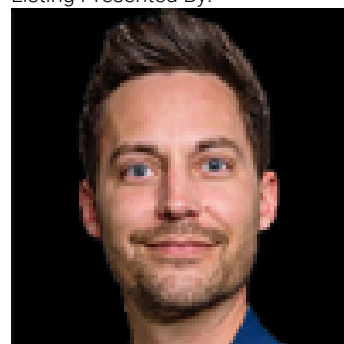


## Edmonton Alberta

\$8

o Flexible main floor spaces suitable for a variety of professional/medical uses o Contemporary 2nd floor walk-up office o Excellent parking with 90? dedicated stalls o Strong Tenant mix featuring established restaurant/pub, medical users and more o Opportunity for pylon signage and/or exterior signage. o Great corner location fronting 119 St and 111 Avenue o Proximity to residential areas of Queen Mary Park, Westmount and Inglewood (id:6769)

Listing Presented By:



Originally Listed by:  
NAI Commercial Real Estate Inc

**RE/MAX ELITE**

**RE/MAX Elite Sherwood Park**

#116, 150 Chippewa Rd ,  
Edmonton, Alberta,

Phone: 780-984-9399

Fax:

steveleddy@hotmail.com