



## Edmonton Alberta

\$169,000

This hard-to-find 3-bedroom, 2-bath condo offers an impressive 1,335 sq ft layout, complete with a private balcony, in-suite laundry, and an oversized storage room—perfect for those who value space and functionality. Located in a well-maintained 45+ adult complex, residents enjoy a full range of amenities including a fitness room, swimming pool, sauna and party room. On-site caretaking and a convenient location make everyday living easy and stress-free. Spacious, well-managed, and ideally located—this is the perfect home for those seeking comfort and convenience in a vibrant community. (id:6769)

**Living room** Measurements not available

**Dining room** Measurements not available

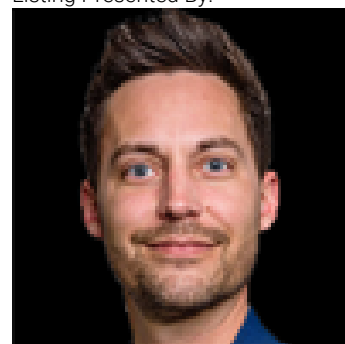
**Kitchen** Measurements not available

**Primary Bedroom** Measurements not available

**Bedroom 2** Measurements not available

**Bedroom 3** Measurements not available

Listing Presented By:



Originally Listed by:  
Mozaic Realty Group

<http://www.fanyangteam.com/>



**RE/MAX Elite Sherwood Park**

#116, 150 Chippewa Rd ,  
Edmonton, Alberta,

Phone: 780-984-9399

Fax:

steveleddy@hotmail.com