



Edmonton Alberta

\$244,900

Discover this sensational two bedroom, two bathroom, CORNER UNIT, with TWO UNDERGROUND TITLED PARKING STALLS in the fantastic Vita Estates condo complex. The entrance is spacious with an area that is perfect for a home office. The OPEN DESIGN has central dining area with newer vinyl plank flooring that spreads into the living room. The kitchen has stunning dark cabinetry, GRANITE COUNTER TOPS and stainless steel appliances. There is a four piece bathroom next to the second bedroom. The primary bedroom has a walk thru closet to the three piece ENSUITE. There is IN SUITE LAUNDRY and a balcony with patio door access off the living room. There is lots of visitor parking, this is a secured building and pet friendly with board approval. Close to all amenities and easy access to the Anthony Henday. (id:6769)

Living room 3.64 m X 4.51 m

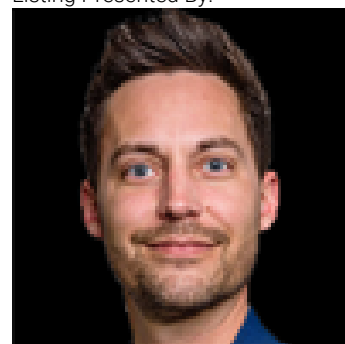
Dining room 3.61 m X 3.99 m

Kitchen 2.45 m X 3.96 m

Primary Bedroom 3.94 m X 3.4 m

Bedroom 2 3.12 m X 3.54 m

Listing Presented By:



Originally Listed by:
Exp Realty

<http://www.matthewbarryrealtygroup.ca/>

RE/MAX ELITE

RE/MAX Elite Sherwood Park

#116, 150 Chippewa Rd ,
Edmonton, Alberta,

Phone: 780-984-9399

Fax:

steveleddy@hotmail.com