



Rural Lac Ste Anne County Alberta

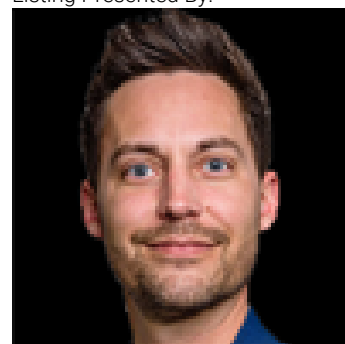
\$582,000

Welcome! This walk out bungalow is the perfect combination of peaceful tranquility & convenience. Enjoy quiet mornings on the front porch enjoying nature or on the back deck viewing wildlife in the privately treed yard, fenced & gated with space for future development. Inside has been meticulously maintained and updated over the years: HWT (19), S/S Appliances, Gas stove (20), A/C (21), Pressure tank (21), to name a few. Open floor plan, with 3 bedrooms up, 1 Bath + 5 pc ensuite. Open galley style kitchen features granite counter, ample counterspace for prep, storage & entertaining. Leading to the convenient main floor laundry, and oversized double attached garage. Downstairs is a walkout basement with 4th bedroom or flex space, bathroom plumbing roughed in, fully insulated walls/headers, just awaits your finishings touches. This home is conveniently located 9 Minutes to Onoway and an easy commute to Spruce Grove, St. Albert or Edmonton. You need to come and see all this home and property have to offer! (id:6769)

Bedroom 4 4.73 m X 7.9 m
Living room 5.83 m X 4.95 m
Dining room 3.11 m X 2.67 m
Kitchen 6.59 m X 4.36 m

Primary Bedroom 3.8 m X 3.86 m
Bedroom 2 3.09 m X 3.39 m
Bedroom 3 3.47 m X 3.06 m

Listing Presented By:



Originally Listed by:
Royal LePage Noralta Real Estate

<https://meaganberard.ca/>

RE/MAX ELITE

RE/MAX Elite Sherwood Park

#116, 150 Chippewa Rd ,
Edmonton, Alberta,

Phone: 780-984-9399

Fax:

steveddy@hotmail.com

The property information on this website is derived from the Canadian Real Estate Association's Data Distribution Facility (DDF®). DDF® references real estate listings held by various brokerage firms and franchisees. The accuracy of information is not guaranteed and should be independently verified. The trademarks REALTOR®, REALTORS® and the REALTOR® logo are controlled by The Canadian Real Estate Association (CREA) and identify real estate professionals who are members of CREA. The trademarks MLS®, Multiple Listing Service® and the associated logos are owned by CREA and identify the quality of services provided by real estate professionals who are members of CREA.