



Edmonton Alberta

\$219,000

Upgraded and Attractive, 1,179 Sq Ft Two Bedroom, Two full bath condo on a quiet tree lined street just one block north of Earl's Restaurant at 119 Street & Jasper Ave. This ideal location is within walking distance to a wide range of amenities. Various educational institutions are also in the area and accessible by public transit. The floor plan is exceptional with great flow, no wasted space and all rooms generous in size. Some of the key upgrades include kitchen cabinets, counter tops, plank flooring and some newer appliances. Another nice feature not often seen in apartment style condos is the wood burning fireplace. A combination ensuite laundry & storage room is well positioned just inside the front entry. Having the convenience of heated underground parking and closely situated to the elevator makes transporting goods to your suite a breeze. Show with confidence! (id:6769)

Living room 4.16*5.06

Dining room 2.51*2.85

Kitchen 2.42*2.73

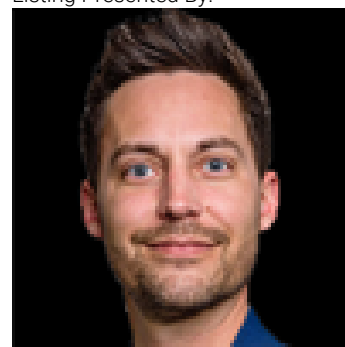
Family room 3.58*3.15

Primary Bedroom 4.87*3.44

Bedroom 2 3.23*3.13

Laundry room 2.13*1.66

Listing Presented By:



Originally Listed by:
RE/MAX Real Estate

RE/MAX ELITE

RE/MAX Elite Sherwood Park

#116, 150 Chippewa Rd ,
Edmonton, Alberta,

Phone: 780-984-9399

Fax:

steveleddy@hotmail.com

The property information on this website is derived from the Canadian Real Estate Association's Data Distribution Facility (DDF®). DDF® references real estate listings held by various brokerage firms and franchisees. The accuracy of information is not guaranteed and should be independently verified. The trademarks REALTOR®, REALTORS® and the REALTOR® logo are controlled by The Canadian Real Estate Association (CREA) and identify real estate professionals who are members of CREA. The trademarks MLS®, Multiple Listing Service® and the associated logos are owned by CREA and identify the quality of services provided by real estate professionals who are members of CREA.