



## Edmonton Alberta

\$114,000

Live in the heart of Wihkwentowin—just steps from the Brewery District, 124th Street, Jasper Ave, great restaurants, cafes, shops and the river valley. This bright and spacious 1-bedroom condo offers natural light, hardwood flooring, and an open layout perfect for urban living. The large living room includes a flex space ideal for a home office or workout area, with access to a generous balcony overlooking a private greenspace. The dining nook opens to a well-laid-out kitchen with newer appliances, maple cabinets, and ample counter space. A good-sized bedroom with full closet, 4-piece bathroom, and the convenience of in-suite storage and laundry complete the unit. Assigned parking stall included. This well-located home offers comfort, walkability, and a vibrant lifestyle in one of Edmonton's most connected central neighbourhoods. (id:6769)

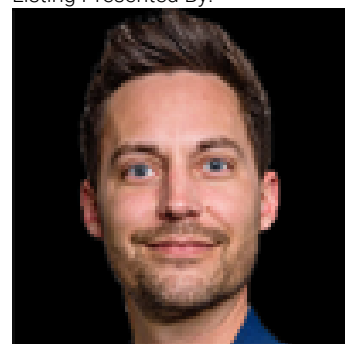
Living room 6.02 m X 3.57 m

Dining room 1.91 m X 2.27 m

Kitchen 2.3 m X 2.27 m

Primary Bedroom 4.05 m X 2.86 m

Listing Presented By:



Originally Listed by:  
RE/MAX Excellence

<http://www.paulblais.ca/>

**RE/MAX ELITE**

**RE/MAX Elite Sherwood Park**

#116, 150 Chippewa Rd ,  
Edmonton, Alberta,

Phone: 780-984-9399

Fax:

steveleddy@hotmail.com

The property information on this website is derived from the Canadian Real Estate Association's Data Distribution Facility (DDF®). DDF® references real estate listings held by various brokerage firms and franchisees. The accuracy of information is not guaranteed and should be independently verified. The trademarks REALTOR®, REALTORS® and the REALTOR® logo are controlled by The Canadian Real Estate Association (CREA) and identify real estate professionals who are members of CREA. The trademarks MLS®, Multiple Listing Service® and the associated logos are owned by CREA and identify the quality of services provided by real estate professionals who are members of CREA.