



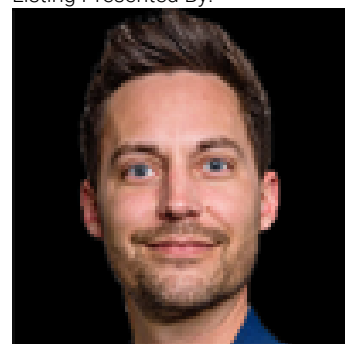
## Edmonton Alberta

\$375,000

Panoramic river valley views set the stage for this beautifully renovated single-level corner unit, where over \$100,000 in upgrades have created a stunning modern contemporary residence. The entire unit has been thoughtfully renovated, including bathrooms, kitchen, doors, closets, flooring, baseboards, trim, and upgraded lighting throughout. Features include raised 8.5' ceilings, solid-core interior doors, Grohe faucets in the kitchen and both bathrooms, updated tubs, shower heads and hand shower, plus custom tile work in the primary ensuite with 10mm glass surround and floating cabinetry. The chef's kitchen showcases custom cabinetry, Corian countertops with curved Corian backsplash, and high-end Bosch appliances including stove, microwave, fridge, and built-in dishwasher. Thoughtful upgrades continue with custom closet organizers in the primary bedroom, entry closet, and study walk-in closet, Hunter Douglas blinds, & LED lighting in the hallway, bathrooms, kitchen, study, living, & dining. (id:6769)

Primary Bedroom Measurements not available

Listing Presented By:



Originally Listed by:  
Initia Real Estate

**RE/MAX ELITE**

**RE/MAX Elite Sherwood Park**

#116, 150 Chippewa Rd ,  
Edmonton, Alberta,

Phone: 780-984-9399

Fax:

steveleddy@hotmail.com

The property information on this website is derived from the Canadian Real Estate Association's Data Distribution Facility (DDF®). DDF® references real estate listings held by various brokerage firms and franchisees. The accuracy of information is not guaranteed and should be independently verified. The trademarks REALTOR®, REALTORS® and the REALTOR® logo are controlled by The Canadian Real Estate Association (CREA) and identify real estate professionals who are members of CREA. The trademarks MLS®, Multiple Listing Service® and the associated logos are owned by CREA and identify the quality of services provided by real estate professionals who are members of CREA.