



## Edmonton Alberta

\$499,900

Welcome to Graydon Hill one of southwest Edmonton's most peaceful, nature-connected communities, surrounded by walking trails, wetlands, and green space while still offering quick access to everything you need. This beautifully finished single-family home proves that thoughtful design matters. With 3 bedrooms, an attached garage OVERSIZED with additional storage, and functional living space, every inch of this home feels intentional. The main floor immediately impresses with soaring coffered ceilings, elegant finishes, and a bright open-concept layout designed for real life. The kitchen blends style and function with full-height cabinetry, modern finishes for entertaining. Upstairs, you'll find three well-sized bedrooms including a comfortable primary retreat, creating the perfect balance of practicality and comfort for families, professionals, or anyone looking for a home that simply makes sense. If you've been searching for a home that offers elevated design, low-maintenance living this is worth a look! (id:6769)

Living room 3.27x5.62

Dining room 2.90x2.43

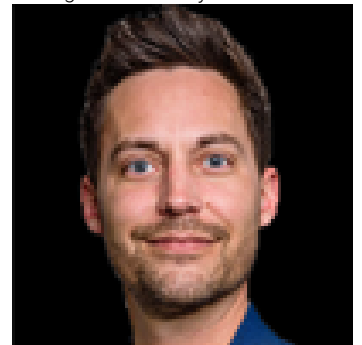
Kitchen 2.90x3.75

Primary Bedroom 3.18x4.40

Bedroom 2 3.18x3.80

Bedroom 3 2.88x3.26

Listing Presented By:



Originally Listed by:  
KIC Realty

<http://www.lifebeyondthekeys.com/>

**RE/MAX ELITE**

**RE/MAX Elite Sherwood Park**

#116, 150 Chippewa Rd ,  
Edmonton, Alberta,

Phone: 780-984-9399

Fax:

steveleddy@hotmail.com

The property information on this website is derived from the Canadian Real Estate Association's Data Distribution Facility (DDF®). DDF® references real estate listings held by various brokerage firms and franchisees. The accuracy of information is not guaranteed and should be independently verified. The trademarks REALTOR®, REALTORS® and the REALTOR® logo are controlled by The Canadian Real Estate Association (CREA) and identify real estate professionals who are members of CREA. The trademarks MLS®, Multiple Listing Service® and the associated logos are owned by CREA and identify the quality of services provided by real estate professionals who are members of CREA.