



Spruce Grove Alberta

\$159,900

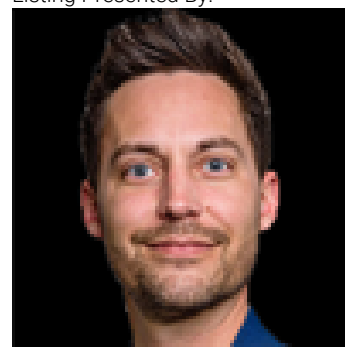
Welcome to this one-bedroom condo surrounded by parks, playgrounds, shopping, and restaurants. Enjoy the abundance of amenities at the Tri Leisure Center, it's steps away! This second-floor home features beautiful new flooring in the bedroom and bathroom. The open kitchen flows into the living room and then leads to the private balcony. Enjoy the incredible sunsets! The spacious bedroom will fit a king-size bed with space to spare. In-suite laundry and a huge storage closet are here for your convenience. This home comes with a titled parking stall, right outside the balcony, and the condo fees are low! Fast highway access for all commuting and located in a great neighbourhood. Perfect for downsizing or the first-time home buyer. (id:6769)

Living room Measurements not available

Primary Bedroom Measurements not available

Kitchen Measurements not available

Listing Presented By:



Originally Listed by:
Century 21 Leading

<http://nancy-petersen.c21.ca/>

RE/MAX ELITE

RE/MAX Elite Sherwood Park

#116, 150 Chippewa Rd ,
Edmonton, Alberta,

Phone: 780-984-9399

Fax:

steveleddy@hotmail.com

The property information on this website is derived from the Canadian Real Estate Association's Data Distribution Facility (DDF®). DDF® references real estate listings held by various brokerage firms and franchisees. The accuracy of information is not guaranteed and should be independently verified. The trademarks REALTOR®, REALTORS® and the REALTOR® logo are controlled by The Canadian Real Estate Association (CREA) and identify real estate professionals who are members of CREA. The trademarks MLS®, Multiple Listing Service® and the associated logos are owned by CREA and identify the quality of services provided by real estate professionals who are members of CREA.