



Edmonton Alberta

\$94,888

Discover an affordable and well-located condo in Central McDougall, ideal for first-time buyers or investors. This 1 bedroom end unit puts you steps from Kingsway Mall, Royal Alex, Glenrose, transit, and the LRT, making daily life incredibly convenient. Inside, you're greeted by a freshly painted space with a handy office nook right at the entry. The bright and spacious living room opens onto a west-facing balcony, ideal for evening sun. The kitchen offers ample cabinetry and opens to the dining area, creating an easy flow to the living room. A huge bonus: it's one of the few units with its own washer and dryer tucked into a dedicated laundry room with extra storage. The peaceful bedroom easily accommodates a king bed and gets great natural light. You'll also appreciate the assigned parking stall located close to the door for easy access. With low condo fees and everything you need within walking distance, this is a practical and smart buy, whether you're starting out or adding to your rental portfolio! (id:6769)

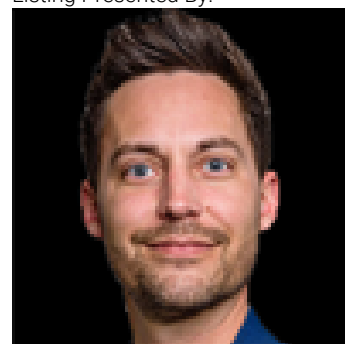
Living room 5.51 m X 3.49 m

Dining room 2.47 m X 2.46 m

Kitchen 2.28 m X 2.27 m

Primary Bedroom 4.69 m X 3.47 m

Listing Presented By:



Originally Listed by:
RE/MAX Real Estate

<http://www.lauratosto.com/>



RE/MAX Elite Sherwood Park

#116, 150 Chippewa Rd ,
Edmonton, Alberta,

Phone: 780-984-9399

Fax:

steveleddy@hotmail.com

The property information on this website is derived from the Canadian Real Estate Association's Data Distribution Facility (DDF®). DDF® references real estate listings held by various brokerage firms and franchisees. The accuracy of information is not guaranteed and should be independently verified. The trademarks REALTOR®, REALTORS® and the REALTOR® logo are controlled by The Canadian Real Estate Association (CREA) and identify real estate professionals who are members of CREA. The trademarks MLS®, Multiple Listing Service® and the associated logos are owned by CREA and identify the quality of services provided by real estate professionals who are members of CREA.