

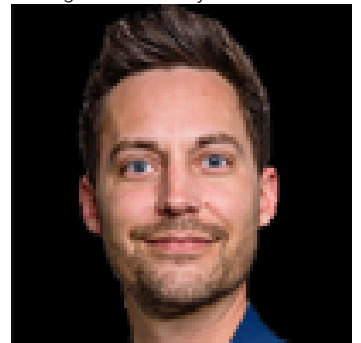


Edmonton Alberta

\$5

Located in the downtown core, surrounded by cafes, restaurants and other amenities. Flexible unit sizes to accommodate various tenant requirements. Full floors available. Built out space available for immediate occupancy. Multiple parking options available nearby. Direct access to LRT, major bus routes, and pedway. River valley views. Multiple suites from 408 sq.ft. to 9,197 sq.ft. available. (id:6769)

Listing Presented By:



Originally Listed by:
NAI Commercial Real Estate Inc

<http://www.naiedmonton.com/>



RE/MAX Elite Sherwood Park

#116, 150 Chippewa Rd ,
Edmonton, Alberta,

Phone: 780-984-9399

Fax:

steveleddy@hotmail.com

The property information on this website is derived from the Canadian Real Estate Association's Data Distribution Facility (DDF®). DDF® references real estate listings held by various brokerage firms and franchisees. The accuracy of information is not guaranteed and should be independently verified. The trademarks REALTOR®, REALTORS® and the REALTOR® logo are controlled by The Canadian Real Estate Association (CREA) and identify real estate professionals who are members of CREA. The trademarks MLS®, Multiple Listing Service® and the associated logos are owned by CREA and identify the quality of services provided by real estate professionals who are members of CREA.