

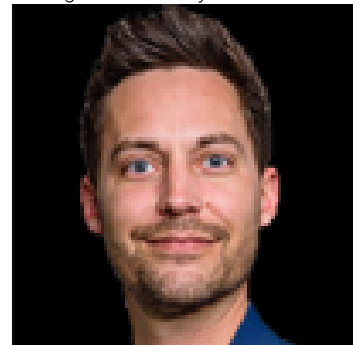


Edmonton Alberta

\$1,595

Welcome to your 895 sqft 2 bed + den / 2 bath apartment in Rutherford, with underground parking included. ***Entire unit will be freshly painted with neutral color This home features: o Primary bedroom features walk-through closet and full ensuite o Large den is perfect for office, playroom, storage, etc o Private, in-suite laundry Lease terms: o Rent is \$1595 and is payable via pre-authorized debit on the 1st of each month o 1 Underground parking stall o NO smoking and NO pets o Available July 20th or August 1st for a 1 year lease o Heat and Water are included - you are responsible for electricity o Tenant insurance is mandatory o Security deposit is equal to one month's rent and is required in full, upon approval o Applications will be processed by pulling a credit check and getting references from your current landlord and employer This location features: o Within walking distance to restaurants, Shoppers, Superstore, an Edmonton Public Library o Close to SaveOn / Sobeyes (id:6769)

Listing Presented By:



Originally Listed by:
Professional Realty Group

<http://www.albertaruss.ca/>

RE/MAX ELITE

RE/MAX Elite Sherwood Park

#116, 150 Chippewa Rd ,
Edmonton, Alberta,

Phone: 780-984-9399

Fax:

steveleddy@hotmail.com

The property information on this website is derived from the Canadian Real Estate Association's Data Distribution Facility (DDF®). DDF® references real estate listings held by various brokerage firms and franchisees. The accuracy of information is not guaranteed and should be independently verified. The trademarks REALTOR®, REALTORS® and the REALTOR® logo are controlled by The Canadian Real Estate Association (CREA) and identify real estate professionals who are members of CREA. The trademarks MLS®, Multiple Listing Service® and the associated logos are owned by CREA and identify the quality of services provided by real estate professionals who are members of CREA.