

Edmonton Alberta

\$92,000

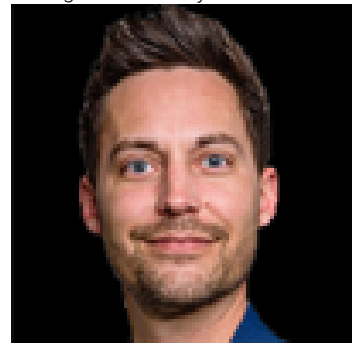
Prime Downtown Location! This bright and spacious 1-bedroom, 1-bath condo offers incredible value with recently updated flooring and sweeping River Valley views. Perfect for first-time buyers, students, professionals, or investors. Enjoy peace of mind with all utilities included - heat, water, and electricity - plus the bonus of underground parking and a secure storage space. Steps from the Ice District, LRT, shopping, dining, nightlife, and River Valley trails. A fantastic opportunity in one of Edmonton's most desirable central communities. (id:6769)

Living room Measurements not available

Primary Bedroom Measurements not available

Dining room Measurements not available

Listing Presented By:



Originally Listed by:
Century 21 Smart Realty

<https://homesbygurjitsandhu.c21.ca/>

RE/MAX ELITE

RE/MAX Elite Sherwood Park

#116, 150 Chippewa Rd ,
Edmonton, Alberta,

Phone: 780-984-9399

Fax:

steveleddy@hotmail.com