

Edmonton Alberta

\$509,600

A smart, efficient layout defines this well-planned home designed for everyday living. The main floor features 9' ceilings, LVP flooring throughout, and a welcoming foyer with a large coat closet that opens into a bright great room filled with natural light. The centrally located kitchen offers quartz countertops, an island with a flush eating ledge, undermount sink, over-the-range microwave, soft-close raised-profile cabinets and drawers, and a pantry. A rear nook with a garden door provides access to the backyard. A main floor bedroom and 3-piece bath with a walk-in shower add flexibility. The home also includes a rear parking pad with an option for a detached double garage. Upstairs features a primary bedroom with a walk-in closet and 3-piece ensuite, plus two additional bedrooms, a full bath, and a convenient laundry closet. (id:6769)

Living room 3.74 m X 3.7 m

Dining room 2.9 m X 2.81 m

Kitchen 4.13 m X 2.47 m

Bedroom 4 3.18 m X 2.71 m

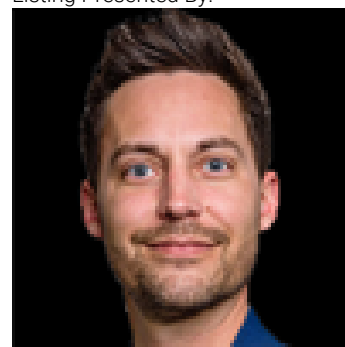
Primary Bedroom 3.83 m X 3.18 m

Bedroom 2 3.23 m X 2.71 m

Bedroom 3 3.45 m X 2.93 m

Bonus Room 3.5 m X 3.2 m

Listing Presented By:



Originally Listed by:
Exp Realty

<http://www.davidlam.exprealty.com/>

RE/MAX ELITE

RE/MAX Elite Sherwood Park

#116, 150 Chippewa Rd ,
Edmonton, Alberta,

Phone: 780-984-9399

Fax:

steveleddy@hotmail.com

The property information on this website is derived from the Canadian Real Estate Association's Data Distribution Facility (DDF®). DDF® references real estate listings held by various brokerage firms and franchisees. The accuracy of information is not guaranteed and should be independently verified. The trademarks REALTOR®, REALTORS® and the REALTOR® logo are controlled by The Canadian Real Estate Association (CREA) and identify real estate professionals who are members of CREA. The trademarks MLS®, Multiple Listing Service® and the associated logos are owned by CREA and identify the quality of services provided by real estate professionals who are members of CREA.