

## Edmonton Alberta

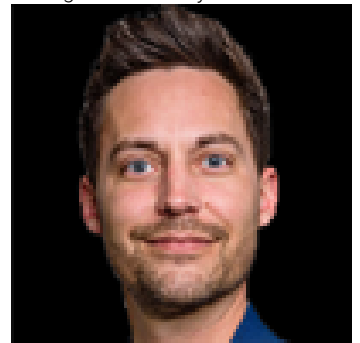
\$109,000

One+Den Condo w/ Underground Parking at Rosedale Place. Open Living Rm & Dining Space. Kitchen w/ ample cabinets, drawers and countertops. Spacious Bedroom & Den, large enough to be a 2nd Bedroom. 4 pc. Full Bath. The Covered Balcony is perfect for Outdoor Entertaining, rail at the back is for High Level Bridge Streetcar which only runs between May to October during daytime. In-suite Laundry completes the unit. Building amenities includes Gym, Sauna and Social Room. Condo fee covers Electricity, Heat, and Water. Walking distance to LRT Station (2mins), Parks/River Valley Trails, Downtown Shops & Restaurants. (id:6769)

Den 8'9" x 11'

Primary Bedroom 9'3" x 14'

Listing Presented By:



Originally Listed by:  
Homes & Gardens Real Estate  
Limited

**RE/MAX ELITE**

**RE/MAX Elite Sherwood Park**

#116, 150 Chippewa Rd ,  
Edmonton, Alberta,

Phone: 780-984-9399

Fax:

steveleddy@hotmail.com

The property information on this website is derived from the Canadian Real Estate Association's Data Distribution Facility (DDF®). DDF® references real estate listings held by various brokerage firms and franchisees. The accuracy of information is not guaranteed and should be independently verified. The trademarks REALTOR®, REALTORS® and the REALTOR® logo are controlled by The Canadian Real Estate Association (CREA) and identify real estate professionals who are members of CREA. The trademarks MLS®, Multiple Listing Service® and the associated logos are owned by CREA and identify the quality of services provided by real estate professionals who are members of CREA.