



## Edmonton Alberta

\$117,000

Great opportunity for investors or first time homeowners! This 2 bedroom condo is ideally located, close to DOWNTOWN and LRT station! This condo has 2 spacious bedroom, one full bathroom, kitchen with a lots of storage including a large storage room/pantry with your IN-SUITE laundry. The large living room is bright with west facing windows and leads out to a HUGE balcony facing west, perfect for soaking up the sun (new SHADES installed) and overlooks a quiet street with MATURE TREES! One covered parking stall. CONDO FEES include HEAT and WATER! Come take a look! (id:6769)

Living room 3.74 m X 4.98 m

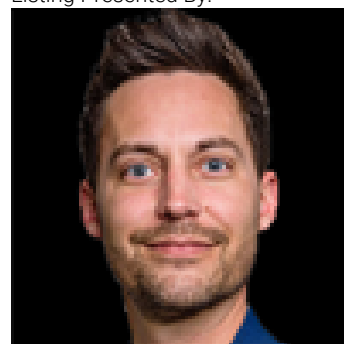
Dining room 4.3 m X 1.8 m

Kitchen 3.2 m X 2.83 m

Primary Bedroom 2.9 m X 4.59 m

Bedroom 2 2.94 m X 3.59 m

Listing Presented By:



Originally Listed by:  
Sterling Real Estate

**RE/MAX ELITE**

**RE/MAX Elite Sherwood Park**

#116, 150 Chippewa Rd ,  
Edmonton, Alberta,

Phone: 780-984-9399

Fax:

steveleddy@hotmail.com