



## Edmonton Alberta

\$749,900

**\*\*7 BEDROOM TOTAL\*\*MAIN FLOOR BED + FULL BATH\*\*TWO BEDROOM LEGAL SUITE\*\*DOUBLE ATTACHED GARAGE\*\*PRIME LOCATION\*** Welcome to this modern and spacious 2-storey home in the highly desirable community of Laurel! Designed for growing families, this home offers a thoughtful layout with a main floor bedroom and full bath--perfect for guests or multi-generational living. The bright open-concept main floor features stylish finishes, vinyl plank flooring, and a functional kitchen that flows seamlessly into the living and dining areas. Upstairs, you'll find generously sized bedrooms including a primary suite with its own ensuite. The unfinished basement provides endless opportunities to customize to your needs. Complete with a double attached garage and located close to parks, schools, shopping, and transit--this home checks all the boxes! (id:6769)

Bedroom 6 Measurements not available

Additional bedroom Measurements not available

Second Kitchen Measurements not available

Recreation room Measurements not available

Living room Measurements not available

Dining room Measurements not available

Kitchen Measurements not available

Laundry room Measurements not available

Bedroom 5 Measurements not available

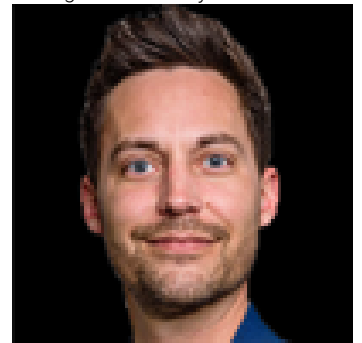
Primary Bedroom Measurements not available

Bedroom 2 Measurements not available

Bedroom 3 Measurements not available

Bedroom 4 Measurements not available

Listing Presented By:



Originally Listed by:  
Nationwide Realty Corp

**RE/MAX ELITE**

**RE/MAX Elite Sherwood Park**

#116, 150 Chippewa Rd ,  
Edmonton, Alberta,

Phone: 780-984-9399

Fax:

steveleddy@hotmail.com

The property information on this website is derived from the Canadian Real Estate Association's Data Distribution Facility (DDF®). DDF® references real estate listings held by various brokerage firms and franchisees. The accuracy of information is not guaranteed and should be independently verified. The trademarks REALTOR®, REALTORS® and the REALTOR® logo are controlled by The Canadian Real Estate Association (CREA) and identify real estate professionals who are members of CREA. The trademarks MLS®, Multiple Listing Service® and the associated logos are owned by CREA and identify the quality of services provided by real estate professionals who are members of CREA.