



## Edmonton Alberta

\$175,000

AMAZING LAYOUT IN AMBLESIDE! 1 BED PLUS DEN with UG PARKING plus STORAGE CAGE! The value of a 2 bedroom for the price of a ONE BEDROOM! There is so much to love about this condo! PET FRIENDLY, IN SUITE LAUNDRY, PRIVATE PATIO, STORAGE, GREAT LOCATION, GYM, PARTY ROOM, and GUEST SUITE. This place is perfect for first time buyer's, downsizers or Investors! Walking trails, Easy access to Anthony Henday, Shops, Restaurants, Grocery stores and everything the area has to offer. GREAT VALUE!! (id:6769)

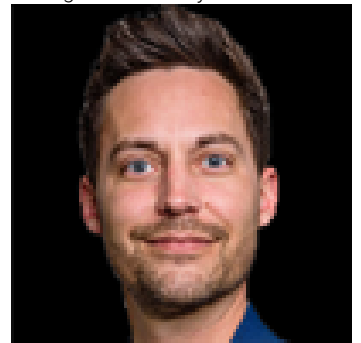
Living room 3.4 m X 4.4 m

Den 2.58 m X 2.2 m

Kitchen 2.31 m X 2.95 m

Primary Bedroom 3.04 m X 3.45 m

Listing Presented By:



Originally Listed by:  
RE/MAX Elite

**RE/MAX ELITE**

**RE/MAX Elite Sherwood Park**

#116, 150 Chippewa Rd ,  
Edmonton, Alberta,

Phone: 780-984-9399

Fax:

steveleddy@hotmail.com

The property information on this website is derived from the Canadian Real Estate Association's Data Distribution Facility (DDF®). DDF® references real estate listings held by various brokerage firms and franchisees. The accuracy of information is not guaranteed and should be independently verified. The trademarks REALTOR®, REALTORS® and the REALTOR® logo are controlled by The Canadian Real Estate Association (CREA) and identify real estate professionals who are members of CREA. The trademarks MLS®, Multiple Listing Service® and the associated logos are owned by CREA and identify the quality of services provided by real estate professionals who are members of CREA.