



Edmonton Alberta

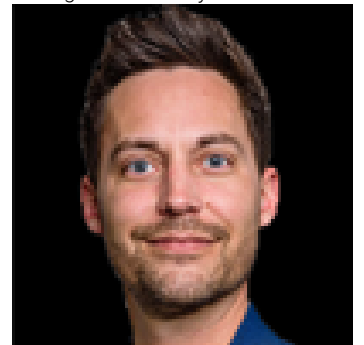
\$559,900

DOUBLE DETACHED GARAGE* *FULLY FINISHED BASEMENT* *5 BEDROOMS* *4 FULL BATHROOMS* * MAIN FLOOR BED & BATH* *10 FT CEILINGS* *SECOND KITCHEN Welcome to this beautifully maintained 2-storey home in the desirable community of Charlesworth! Built in 2022, this impressive property offers over 1,700 sq. ft. of finished living space across 3 levels. The main floor features an open-concept layout with 10-ft ceilings, a spacious living room with an electric fireplace, modern kitchen, dining area, mudroom, a bedroom, and a full 3-piece bath. Upstairs you'll find a generous family room, convenient laundry, 3 bedrooms, and 2 full bathrooms including a private ensuite in the primary suite. The fully finished basement adds incredible versatility with 2 additional bed, a full bath, and a second kitchen--perfect for extended family. Enjoy the fully landscaped yard, deck, patio, and double detached garage. Conveniently located close to schools, shopping, parks, playgrounds, public transportation, and all major amenities. (id:6769)

- Bedroom 5 Measurements not available
- Bedroom 6 Measurements not available
- Second Kitchen Measurements not available
- Utility room Measurements not available
- Living room Measurements not available
- Dining room Measurements not available
- Kitchen Measurements not available

- Bedroom 4 Measurements not available
- Mud room Measurements not available
- Family room Measurements not available
- Primary Bedroom Measurements not available
- Bedroom 2 Measurements not available
- Bedroom 3 Measurements not available
- Laundry room Measurements not available

Listing Presented By:



Originally Listed by:
Nationwide Realty Corp



RE/MAX Elite Sherwood Park

#116, 150 Chippewa Rd ,
Edmonton, Alberta,

Phone: 780-984-9399
Fax:
steveleddy@hotmail.com

The property information on this website is derived from the Canadian Real Estate Association's Data Distribution Facility (DDF®). DDF® references real estate listings held by various brokerage firms and franchisees. The accuracy of information is not guaranteed and should be independently verified. The trademarks REALTOR®, REALTORS® and the REALTOR® logo are controlled by The Canadian Real Estate Association (CREA) and identify real estate professionals who are members of CREA. The trademarks MLS®, Multiple Listing Service® and the associated logos are owned by CREA and identify the quality of services provided by real estate professionals who are members of CREA.