



## Edmonton Alberta

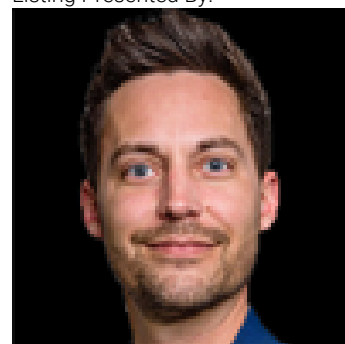
\$329,900

Welcome to this TWO bedrooms, TWO full baths plus DEN condo unit in LUX at Upper Windermere - a luxury STEEL & CONCRETE condo building in a fabulous area. This unit offers an open concept and very functional floor plan. Features laminate flooring w/ 9' ceilings; A convenient DEN is off entry. Gourmet kitchen has ample ceiling height cabinets, quartz countertops, stainless steel appliances, canopy hood fan & full height mosaic glass backsplash. Primary bedroom comes with a walk-through closet & 4 pc ensuite w/ double sinks. One more good sized bedroom & one 4pc main bath. One titled & heated underground parking. In suite Laundry. A large west facing balcony with great pond view. Luxury condo living with great access to all amenities including public transportation, walking distance to shopping restaurants, banking, onsite daycare & pharmacy, a K-9 school and much more! \*\*\*Builder's Plan indicates 968 sq.ft for the enclosed area of this unit\*\*\*. (id:6769)

Living room Measurements not available  
Dining room Measurements not available  
Kitchen Measurements not available  
Den Measurements not available

Primary Bedroom Measurements not available  
Bedroom 2 Measurements not available  
Laundry room Measurements not available

Listing Presented By:



Originally Listed by:  
Mozaic Realty Group

<http://www.fanyangteam.com/>

**RE/MAX ELITE**

**RE/MAX Elite Sherwood Park**

#116, 150 Chippewa Rd ,  
Edmonton, Alberta,

Phone: 780-984-9399

Fax:

steveleddy@hotmail.com