



Edmonton Alberta

\$590,000

Welcome to this stunning home offering ONE BEDROOM FULLY FINISHED LEGAL BASEMENT WITH SEPARATE ENTRANCE with exceptional flexibility for extended family living or guest accommodations. Step into the bright and inviting main floor that features modern kitchen with stainless steel appliances, rich cabinetry, quartz counter tops, a large island, and a corner pantry for everyday living. An adjoining dining area, a living room providing a warm and comfortable space for relaxation, and convenient 2-piece powder room completes this level. The upper floor includes a primary bedroom with a walk-in closet and ensuite washroom. Two additional bedrooms, a full washroom completes this level. The basement has a full kitchen with stainless steel appliances, a dining room, a sitting room, and bedroom. (id:6769)

Bedroom 4 2.86 m X 3.07 m

Second Kitchen 1.53 m X 4.2 m

Laundry room 0.99 m X 1 m

Breakfast 2.02 m X 1.88 m

Living room 3.34 m X 3.93 m

Dining room 2.41 m X 3.63 m

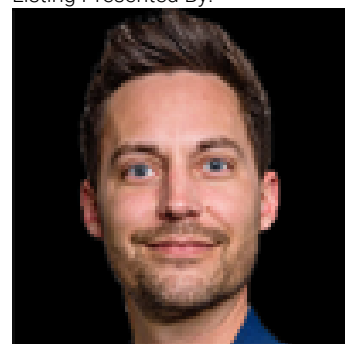
Kitchen 3.02 m X 4.46 m

Primary Bedroom 3.8 m X 4.18 m

Bedroom 2 2.72 m X 3.49 m

Bedroom 3 3.2 m X 2.94 m

Listing Presented By:



Originally Listed by:
Sterling Real Estate

RE/MAX ELITE

RE/MAX Elite Sherwood Park

#116, 150 Chippewa Rd ,
Edmonton, Alberta,

Phone: 780-984-9399

Fax:

steveleddy@hotmail.com

The property information on this website is derived from the Canadian Real Estate Association's Data Distribution Facility (DDF®). DDF® references real estate listings held by various brokerage firms and franchisees. The accuracy of information is not guaranteed and should be independently verified. The trademarks REALTOR®, REALTORS® and the REALTOR® logo are controlled by The Canadian Real Estate Association (CREA) and identify real estate professionals who are members of CREA. The trademarks MLS®, Multiple Listing Service® and the associated logos are owned by CREA and identify the quality of services provided by real estate professionals who are members of CREA.