



## Sherwood Park Alberta

\$374,900

Excellent location in the heart of Sherwood Park. Carefree condo living in the well managed Horizon Village. Walking distance to the mall, theater, restaurants etc. this half duplex style home features a large living room and dining room, a kitchen opening to a new deck with glass railings, main floor laundry, 2nd bedroom/den, a large master bedroom and a 4 piece bathroom. Recent upgrades include new lighting, vanity top and toilet, newer windows and patio doors(2015), upgrade engineered hardwood, linoleum and carpet, newer paint,new garage opener, high efficiency furnace(2020), new kitchen appliances, and central air(2022-2024). Attached garage is insulated. Clubhouse features 2 levels, 2 kitchens, games room, library, chair lift, pool table etc. (id:6769)

Family room 9.72 m X 7.93 m

Storage 6.17 m X 4.92 m

Utility room 4.81 m X 3.07 m

Living room 4.2 m X 4.76 m

Dining room 4.2 m X 2.49 m

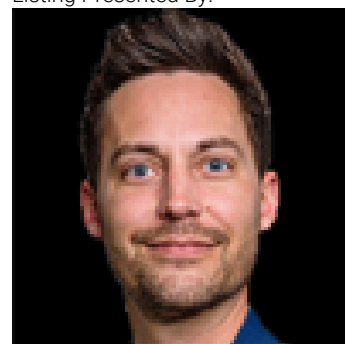
Kitchen 3.3 m X 2.34 m

Primary Bedroom 3.22 m X 4.38 m

Bedroom 2 2.67 m X 3.38 m

Breakfast 3.3 m X 1.53 m

Listing Presented By:



Originally Listed by:  
NOW Real Estate Group

<http://www.ralphhenzehomes.com/>

**RE/MAX ELITE**

**RE/MAX Elite Sherwood Park**

#116, 150 Chippewa Rd ,  
Edmonton, Alberta,

Phone: 780-984-9399

Fax:

steveleddy@hotmail.com

The property information on this website is derived from the Canadian Real Estate Association's Data Distribution Facility (DDF®). DDF® references real estate listings held by various brokerage firms and franchisees. The accuracy of information is not guaranteed and should be independently verified. The trademarks REALTOR®, REALTORS® and the REALTOR® logo are controlled by The Canadian Real Estate Association (CREA) and identify real estate professionals who are members of CREA. The trademarks MLS®, Multiple Listing Service® and the associated logos are owned by CREA and identify the quality of services provided by real estate professionals who are members of CREA.