



## Spruce Grove Alberta

\$589,900

WELCOME HOME! This charming 2-storey home in the desirable neighborhood of Greenbury has it all! With 3 spacious bedrooms and 2.5 bathrooms, there's room for the whole family. The open-concept main floor features 9' ceilings, gleaming hardwood floors, a bright living area, and a modern kitchen with stainless steel appliances, including a gas stove, maple cabinetry with soft close drawers, stone fireplace—perfect for cooking and entertaining. Upstairs, you'll find a versatile bonus room, ideal for a home office, playroom, or cozy movie nights. The partially finished basement is waiting for your finishing touch. The backyard oasis features a deck perfect for hosting, a good sized yard, gazebo & hot tub. Located in a family-friendly neighbourhood close to parks, schools, and amenities, this home is move-in ready and waiting for you! (id:6769)

Living room 4.88 m X 4.49 m

Dining room 3.37 m X 3.37 m

Kitchen 4.92 m X 3.54 m

Office 3.33 m X 3.72 m

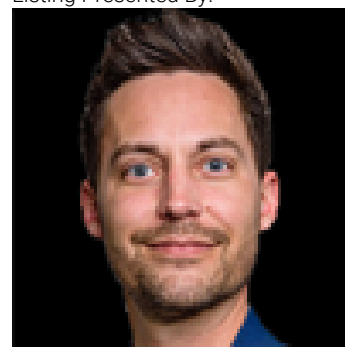
Family room 5.86 m X 4.12 m

Primary Bedroom 4.79 m X 4.23 m

Bedroom 2 3.77 m X 3.35 m

Bedroom 3 3.16 m X 3.82 m

Listing Presented By:



Originally Listed by:  
RE/MAX Professionals

<http://www.nickgolden.com/>

**RE/MAX ELITE**

**RE/MAX Elite Sherwood Park**

#116, 150 Chippewa Rd ,  
Edmonton, Alberta,

Phone: 780-984-9399

Fax:

steveleddy@hotmail.com

The property information on this website is derived from the Canadian Real Estate Association's Data Distribution Facility (DDF®). DDF® references real estate listings held by various brokerage firms and franchisees. The accuracy of information is not guaranteed and should be independently verified. The trademarks REALTOR®, REALTORS® and the REALTOR® logo are controlled by The Canadian Real Estate Association (CREA) and identify real estate professionals who are members of CREA. The trademarks MLS®, Multiple Listing Service® and the associated logos are owned by CREA and identify the quality of services provided by real estate professionals who are members of CREA.