



FATBURGER

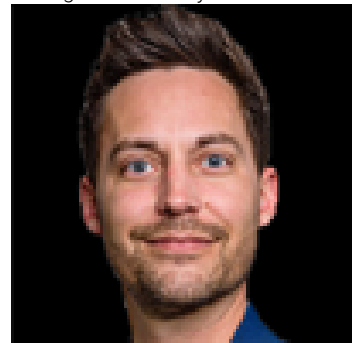
Since 1952

Sherwood Park Alberta

\$350,000

Profitable Fatburger Franchise Opportunity - Sherwood Park Here's your chance to invest in a thriving Fatburger location, part of a strong and well-established franchise network. Fatburger is a recognized leader in the premium burger market, serving a diverse menu of burgers, wings, and breakfast favorites. The brand is renowned for its comprehensive franchisee support program, including ongoing training and marketing assistance. This Sherwood Park location enjoys exceptional exposure on high-traffic Baseline Road, occupying a prominent corner unit with outstanding visibility. The Franchisor is seeking a dedicated, full-time owner/operator with proven business management skills. A minimum equity investment of \$170,000 is MUST required for Franchisor approval. Store size: 2500 sqft (75 seats + 10 patio seats). Lease fee total: \$11,000/m. Lease term 8 years left. For more information, please contact Peter Chen at (780) 545-8888. Do not approach to staff. (id:6769)

Listing Presented By:



Originally Listed by:
MaxWell Polaris

RE/MAX ELITE

RE/MAX Elite Sherwood Park

#116, 150 Chippewa Rd ,
Edmonton, Alberta,

Phone: 780-984-9399

Fax:

steveleddy@hotmail.com

The property information on this website is derived from the Canadian Real Estate Association's Data Distribution Facility (DDF®). DDF® references real estate listings held by various brokerage firms and franchisees. The accuracy of information is not guaranteed and should be independently verified. The trademarks REALTOR®, REALTORS® and the REALTOR® logo are controlled by The Canadian Real Estate Association (CREA) and identify real estate professionals who are members of CREA. The trademarks MLS®, Multiple Listing Service® and the associated logos are owned by CREA and identify the quality of services provided by real estate professionals who are members of CREA.