



## Edmonton Alberta

\$415,000

This beautifully maintained no condo fee townhouse in the desirable community of Glenridding Heights offers the perfect blend of comfort, style, and convenience. A charming front porch welcomes you into an open-concept main floor centered around a modern kitchen with quartz countertops, stainless steel appliances and a good-sized island. Bright living and dining areas create a warm and functional layout, complemented by a convenient half bath. Upstairs, the spacious primary suite features a walk-in closet and full ensuite, while two additional well-sized bedrooms and another full bathroom provide plenty of room for family or guests. The unfinished basement offers potential for future development tailored to your needs. Outside, a fenced backyard and double detached garage complete the property. Located close to an abundance of amenities--parks, schools, trails, shopping--and offering quick access to Anthony Henday and Ellerslie Road, this home checks every box. (id:6769)

Living room Measurements not available

Dining room Measurements not available

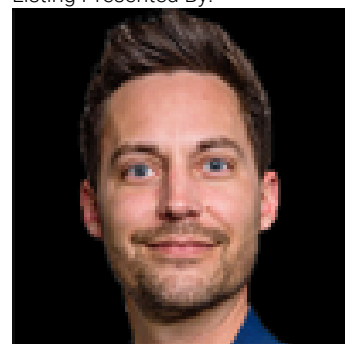
Kitchen Measurements not available

Primary Bedroom Measurements not available

Bedroom 2 Measurements not available

Bedroom 3 Measurements not available

Listing Presented By:



Originally Listed by:  
Homes & Gardens Real Estate  
Limited

**RE/MAX ELITE**

**RE/MAX Elite Sherwood Park**

#116, 150 Chippewa Rd ,  
Edmonton, Alberta,

Phone: 780-984-9399

Fax:

steveleddy@hotmail.com

The property information on this website is derived from the Canadian Real Estate Association's Data Distribution Facility (DDF®). DDF® references real estate listings held by various brokerage firms and franchisees. The accuracy of information is not guaranteed and should be independently verified. The trademarks REALTOR®, REALTORS® and the REALTOR® logo are controlled by The Canadian Real Estate Association (CREA) and identify real estate professionals who are members of CREA. The trademarks MLS®, Multiple Listing Service® and the associated logos are owned by CREA and identify the quality of services provided by real estate professionals who are members of CREA.