



Edmonton Alberta

\$699,900

Stunning 2 storey home in Edmonton's most desirable ravine community of Cameron Heights. Over 3200 sqft of developed living space. Main floor features an open concept layout with open to above entrance and living room(18ft), a gourmet kitchen with abundance of natural light, plenty of countertop space (granite), massive island, walk through pantry and a good sized den/office. Second floor offers a primary bedroom retreat with spa like 5 pc bathroom with oversize shower, corner tub and a large walk in closet. 2more bedrooms, 4pc bath and a specious bonus room compete the upstairs. Basement is fully finished with a huge rec room, 3 pc bath, dry bar with built in wine cooler and additional bedroom. Central Air Conditioner. 24x24 freshly painted double garage. Professionally landscaped South facing backyard with beautiful flowers, trees and shrubs. Located in the private Cul-De Sac. Close to parks, playgrounds and ravine walking trails. Soon Possession! (id:6769)

Bedroom 4 Measurements not available

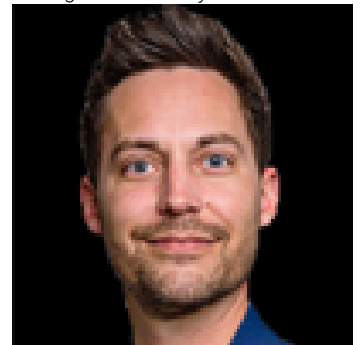
Bedroom 2 Measurements not available

Den Measurements not available

Bedroom 3 Measurements not available

Primary Bedroom Measurements not available

Listing Presented By:



Originally Listed by:
RE/MAX Excellence

RE/MAX ELITE

RE/MAX Elite Sherwood Park

#116, 150 Chippewa Rd ,
Edmonton, Alberta,

Phone: 780-984-9399

Fax:

steveleddy@hotmail.com

The property information on this website is derived from the Canadian Real Estate Association's Data Distribution Facility (DDF®). DDF® references real estate listings held by various brokerage firms and franchisees. The accuracy of information is not guaranteed and should be independently verified. The trademarks REALTOR®, REALTORS® and the REALTOR® logo are controlled by The Canadian Real Estate Association (CREA) and identify real estate professionals who are members of CREA. The trademarks MLS®, Multiple Listing Service® and the associated logos are owned by CREA and identify the quality of services provided by real estate professionals who are members of CREA.