



Edmonton Alberta

\$454,900

Experience the perfect blend of comfort in this well-maintained 1,700 sq. ft. corner-lot duplex, offering more square footage than many detached single-family homes, without the hassle of shoveling the sidewalk! The open-concept main floor features a kitchen with quartz countertops, full-height cabinetry, and a corner pantry, perfect for entertaining. Sunlight pours through oversized windows accented by custom shutters. Stay cool with Central AC and enjoy year-round vacation vibes with Lake Summerside access. The unique floor plan features a private primary suite on its own level with walk in closet, separated from two spacious bedrooms (bedroom 2nd also has walk in closet) and a massive bonus room. Ultimate convenience is found with upper-floor laundry. Located 3min walk from Strembitsky School, parks, and transit, this smart home includes a Nest thermostat, digital lock, and phone-controlled garage door. The 9-ft ceiling basement offers incredible potential for a future legal suite (side entrance) (id:6769)

Living room 2.63 x 3.42

Dining room 3.32 x 2.23

Kitchen 3.51 x 3.15

Pantry 1.21 x 1.19

Primary Bedroom 4.47 x 3.37

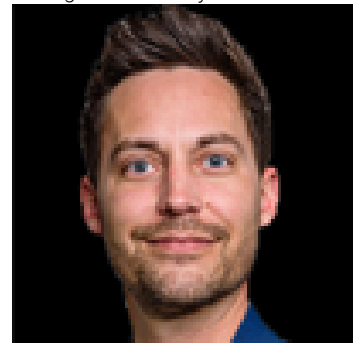
Bedroom 2 4.64 x 2.95

Bedroom 3 5.16 x 2.74

Bonus Room 3.47 x 4.62

Laundry room 1.91 x 1.52

Listing Presented By:



Originally Listed by:
Exp Realty

<https://rupinderkaur.exp Realty.com/>

RE/MAX ELITE

RE/MAX Elite Sherwood Park

#116, 150 Chippewa Rd ,
Edmonton, Alberta,

Phone: 780-984-9399

Fax:

steveleddy@hotmail.com

The property information on this website is derived from the Canadian Real Estate Association's Data Distribution Facility (DDF®). DDF® references real estate listings held by various brokerage firms and franchisees. The accuracy of information is not guaranteed and should be independently verified. The trademarks REALTOR®, REALTORS® and the REALTOR® logo are controlled by The Canadian Real Estate Association (CREA) and identify real estate professionals who are members of CREA. The trademarks MLS®, Multiple Listing Service® and the associated logos are owned by CREA and identify the quality of services provided by real estate professionals who are members of CREA.