

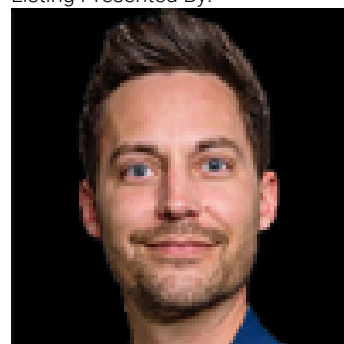


## Edmonton Alberta

\$32

242 -1,217 sq. ft. and 270-1,577 sq. ft. of Prime main floor commercial space. High exposure to 33,100 vehicles per day along 91 Street (City of Edmonton) Ample on - site surface parking Other tenants include, gym, daycare, medical clinic, kick boxing, Cannabis, Tailors and more. (id:6769)

Listing Presented By:



Originally Listed by:  
Square 1 Realty Ltd



### RE/MAX Elite Sherwood Park

#116, 150 Chippewa Rd ,  
Edmonton, Alberta,

Phone: 780-984-9399

Fax:

steveleddy@hotmail.com

The property information on this website is derived from the Canadian Real Estate Association's Data Distribution Facility (DDF®). DDF® references real estate listings held by various brokerage firms and franchisees. The accuracy of information is not guaranteed and should be independently verified. The trademarks REALTOR®, REALTORS® and the REALTOR® logo are controlled by The Canadian Real Estate Association (CREA) and identify real estate professionals who are members of CREA. The trademarks MLS®, Multiple Listing Service® and the associated logos are owned by CREA and identify the quality of services provided by real estate professionals who are members of CREA.