



Edmonton Alberta

\$282,854

Well maintained and in an A-1 Location this 2 storey townhouse is move in ready and is sure to impress. Nestled in the heart of Millwoods, close to all amenities, very functional and attractive floor plan, 1288 sq ft, 3+1 bedrooms, 1.5 bathrooms, partially finished basement and 2 PARKING STALLS RIGHT AT YOUR FRONT DOOR. Kitchen features lots of cabinetry, counter space and all appliances stay (including new dish washer). Living room is spacious, has new window coverings, laminate floor and bayed out window / patio door to rear deck. Upstairs features 4 pc main bath and 3 bedrooms including large primary with bay window, new window coverings with black out liner and walk in closet. Basement development has family room with electric fire place, 4th bedroom, utilities , laundry and storage. You won't find a better or more complete package than this gem. You will love your new home. (id:6769)

Family room Measurements not available

Bedroom 4 Measurements not available

Living room Measurements not available

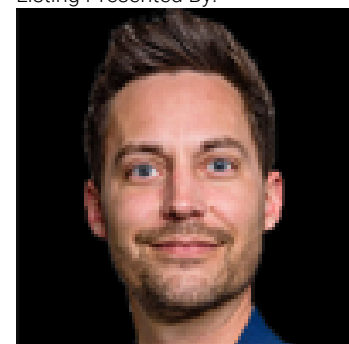
Kitchen Measurements not available

Primary Bedroom Measurements not available

Bedroom 2 Measurements not available

Bedroom 3 Measurements not available

Listing Presented By:



Originally Listed by:
Maxwell Heritage Realty

<http://www.colinbland.com/>

RE/MAX ELITE

RE/MAX Elite Sherwood Park

#116, 150 Chippewa Rd ,
Edmonton, Alberta,

Phone: 780-984-9399

Fax:

steveleddy@hotmail.com

The property information on this website is derived from the Canadian Real Estate Association's Data Distribution Facility (DDF®). DDF® references real estate listings held by various brokerage firms and franchisees. The accuracy of information is not guaranteed and should be independently verified. The trademarks REALTOR®, REALTORS® and the REALTOR® logo are controlled by The Canadian Real Estate Association (CREA) and identify real estate professionals who are members of CREA. The trademarks MLS®, Multiple Listing Service® and the associated logos are owned by CREA and identify the quality of services provided by real estate professionals who are members of CREA.