



# Edmonton Alberta

\$249,900

Welcome to the 25th floor of FOX Two. Experience refined urban living in the heart of Edmonton's Ice District. This modern 1-bedroom PLUS DEN condo features huge south-facing windows with sweeping skyline views, A/C, 9' ceilings and a modern kitchen with quartz countertops, stainless steel appliances, and a breakfast bar for four. The well-designed bedroom includes a walk-through closet with access to the 4-piece bathroom. DEN just off the entry way makes for the perfect office space or work-out room, etc. Enjoy the large south-facing, covered balcony with gas hookup—perfect for a BBQ or patio heater. Includes IN-SUITE laundry, titled, heated underground parking and Bluebox package locker system. Steps from all the best downtown has to offer: YMCA, entertainment, festivals, farmers markets, dining, shopping, and schools, LRT. A quiet oasis in the heart of it all. (id:6769)

Living room 3.66 m X 2.72 m

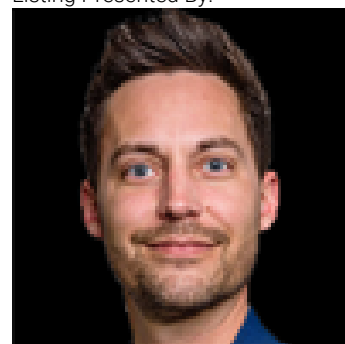
Dining room 3.66 m X 1.95 m

Kitchen 2.48 m X 4.3 m

Den 2.82 m X 2.2 m

Primary Bedroom 2.86 m X 3.39 m

Listing Presented By:



Originally Listed by:  
MaxWell Devonshire Realty

<https://janeentinker.ca/>

**RE/MAX ELITE**

**RE/MAX Elite Sherwood Park**

#116, 150 Chippewa Rd ,  
Edmonton, Alberta,

Phone: 780-984-9399

Fax:

steveleddy@hotmail.com

The property information on this website is derived from the Canadian Real Estate Association's Data Distribution Facility (DDF®). DDF® references real estate listings held by various brokerage firms and franchisees. The accuracy of information is not guaranteed and should be independently verified. The trademarks REALTOR®, REALTORS® and the REALTOR® logo are controlled by The Canadian Real Estate Association (CREA) and identify real estate professionals who are members of CREA. The trademarks MLS®, Multiple Listing Service® and the associated logos are owned by CREA and identify the quality of services provided by real estate professionals who are members of CREA.