



Sherwood Park Alberta

\$479,000

Fantastic opportunity to raise your family in this original owner home. With 4 bedrooms, 2 full baths, 2pc ensuite & over 2000 sq ft of living space on a huge 756 sqM lot, this house has much to offer a growing family. Property is much loved & maintained over the years, but does need some TLC & updating. Improvements include hardwood floors, furnace & hot water tank (2024), shingles (2015), stove & dishwasher (2022) and some windows were replaced in the 2000s. South facing backyard with raised garden beds many perennials & mature trees. Oversized, heated, double car garage. Extended driveway with room to park multiple vehicles or RV parking. Property is centrally located in a mature, established family neighborhood of Glen Allan with quick access to all major roads & highways. Schools, all amenities, services, shopping, restaurants & cafes within walking distance. Live active & close to nature with Broadmoor Park & golf course, Glen Allen Rec complex, Greengrove Park & Gilmore Park. (id:6769)

Family room 4.30 x 12.0

Bedroom 4 4.07 x 2.64

Living room 4.02 x 5.52

Dining room 3.67 x 2.91

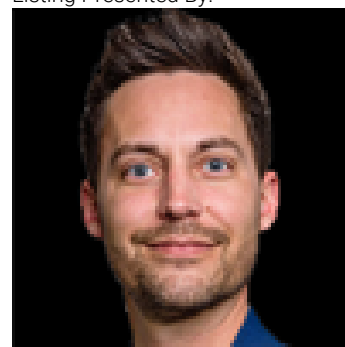
Kitchen 4.18 x 2.77

Primary Bedroom 4.11 x 3.09

Bedroom 2 3.32 x 2.62

Bedroom 3 3.34 x 3.06

Listing Presented By:



Originally Listed by:
Royal LePage Noralta Real Estate

<https://lisa.leung@royallepage.ca/>

RE/MAX ELITE

RE/MAX Elite Sherwood Park

#116, 150 Chippewa Rd ,
Edmonton, Alberta,

Phone: 780-984-9399

Fax:

steveleddy@hotmail.com

The property information on this website is derived from the Canadian Real Estate Association's Data Distribution Facility (DDF®). DDF® references real estate listings held by various brokerage firms and franchisees. The accuracy of information is not guaranteed and should be independently verified. The trademarks REALTOR®, REALTORS® and the REALTOR® logo are controlled by The Canadian Real Estate Association (CREA) and identify real estate professionals who are members of CREA. The trademarks MLS®, Multiple Listing Service® and the associated logos are owned by CREA and identify the quality of services provided by real estate professionals who are members of CREA.