



Sherwood Park Alberta

\$485,707

BEAUTIFUL & INVITING! You'll love this 2 storey home in Summerwood, offering a lovely front deck, 1383 square feet plus a FULLY FINISHED basement! This beauty features an open and spacious layout with a generous front entrance, living room with newer laminate flooring and attractive stone-facing gas fireplace. Modern and bright kitchen with tiled flooring, all appliances included and a large dining area. Main floor powder room. Upstairs are 3 bedrooms and a 4-piece bathroom. The Primary Bedroom accommodates a king-size bed, and offers a walk-in closet and a beautiful 4-piece ensuite. The basement has a family room with newer laminate flooring, laundry room with shelving & 2-piece bathroom (room for shower), and storage space. NEWER FURNACE & HWT. Central vac system, some new paint & newer light fixtures. Lovely WEST-FACING backyard & a double detached garage. An easy commute to highway 21, and close to parks, trails, and many great amenities. Move in and enjoy! Visit REALTOR(R) website for more information. (id:6769)

Recreation room Measurements not available

Laundry room Measurements not available

Storage Measurements not available

Living room Measurements not available

Dining room Measurements not available

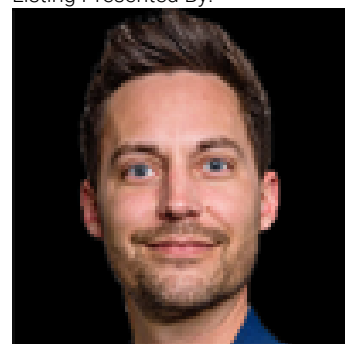
Kitchen Measurements not available

Primary Bedroom Measurements not available

Bedroom 2 Measurements not available

Bedroom 3 Measurements not available

Listing Presented By:



Originally Listed by:
RE/MAX Elite

<http://www.soniasells.com/>



RE/MAX Elite Sherwood Park

#116, 150 Chippewa Rd ,
Edmonton, Alberta,

Phone: 780-984-9399

Fax:

steveleddy@hotmail.com

The property information on this website is derived from the Canadian Real Estate Association's Data Distribution Facility (DDF®). DDF® references real estate listings held by various brokerage firms and franchisees. The accuracy of information is not guaranteed and should be independently verified. The trademarks REALTOR®, REALTORS® and the REALTOR® logo are controlled by The Canadian Real Estate Association (CREA) and identify real estate professionals who are members of CREA. The trademarks MLS®, Multiple Listing Service® and the associated logos are owned by CREA and identify the quality of services provided by real estate professionals who are members of CREA.