



Edmonton Alberta

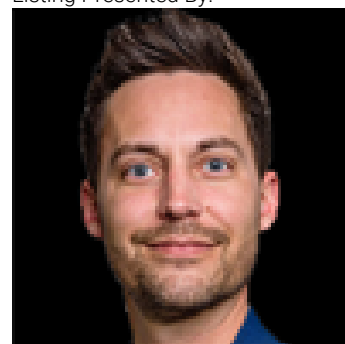
\$1,750,000

Rare 1.09-acre property in Edmonton's prestigious Windermere backing onto greenspace, offering private acreage living within city limits. From front porch, through open foyer, you are welcomed into the open-concept main floor, ideal for families and entertaining; a well aligned stairway, family room and living room all beckon you in. There is a seamless flow between the living room, dining area and sunroom to the rear deck for BBQs or morning coffee w/the kitchen opening here to complete the flow. Large laundry and a 2-pce bath complete the main level. Upstairs offers a bonus room, 4 bedrooms, 4-pc bath and an impressive primary retreat with luxurious 7-pce ensuite. The fully finished lower level includes a rec room with wet bar, gym, 3-pc bath, office & plenty of storage. Heated oversized detached garage offers space for vehicles, hobbies or workshop use. Minutes to schools, shopping, golf and river valley trails, this beautifully designed home blends space, comfort and lifestyle. (id:6769)

- Den 5.09 m X 4.88 m
- Recreation room 11.18 m X 6.05 m
- Storage 5.21 m X 4.24 m
- Living room 5.48 m X 5.29 m
- Dining room 4.73 m X 5.29 m
- Kitchen 4.67 m X 5.94 m
- Family room 6.65 m X 5.18 m

- Sunroom 3.15 m X 5.54 m
- Primary Bedroom 5.23 m X 5.49 m
- Bedroom 2 5.23 m X 3.94 m
- Bedroom 3 4.58 m X 4.7 m
- Bedroom 4 4.58 m X 4.73 m
- Bonus Room 5.22 m X 3.53 m

Listing Presented By:



Originally Listed by:
RE/MAX Excellence

<http://www.johnconnor.ca/>



RE/MAX Elite Sherwood Park

#116, 150 Chippewa Rd ,
Edmonton, Alberta,

Phone: 780-984-9399
Fax:
steveleddy@hotmail.com

The property information on this website is derived from the Canadian Real Estate Association's Data Distribution Facility (DDF®). DDF® references real estate listings held by various brokerage firms and franchisees. The accuracy of information is not guaranteed and should be independently verified. The trademarks REALTOR®, REALTORS® and the REALTOR® logo are controlled by The Canadian Real Estate Association (CREA) and identify real estate professionals who are members of CREA. The trademarks MLS®, Multiple Listing Service® and the associated logos are owned by CREA and identify the quality of services provided by real estate professionals who are members of CREA.